

CATALOGUE NUMBER 6202.2
13 MAY 1992

**THE LABOUR FORCE, VICTORIA,
FEBRUARY 1992**

SUMMARY OF FINDINGS

THE LABOUR FORCE, VICTORIA: ORIGINAL SERIES

<i>Labour force status</i>	<i>Unit</i>	<i>February 1991</i>	<i>December 1991</i>	<i>January 1992</i>	<i>February 1992</i>	<i>Annual percentage change</i>
Employed	('000)	2,023.2	2,000.3	1,951.4	1,952.6	-3.5
Unemployed	('000)	210.5	255.4	258.0	274.0	30.2
Labour force	('000)	2,233.7	2,255.7	2,209.4	2,226.6	-0.3
Unemployment rate	(per cent)	9.4	11.3	11.7	12.3	30.9
Participation rate	(per cent)	64.5	64.6	63.2	63.6	-1.4

Employment

Employment in Victoria dropped from 2,023,200 in February 1991 to 1,952,600 in February 1992, a fall of 70,600 or 3.5 per cent.

The number of male full time employed fell by 55,200, however the number of male part time employed rose by 11,500. This resulted in an overall drop in male employment of 43,700. The number of employed females fell by 26,900. Part time workers comprised almost half (13,200) of this amount.

Seasonally adjusted, the total number of employed in Victoria fell 25,200 or 1.3 per cent in the period January 1992 to February 1992.

Unemployment

Unemployment rose from 210,500 in February 1991 to 274,000 in February 1992, an increase of 63,500 or 30.2 per cent. Males were affected most, making up 45,200 of this figure.

The unemployment rate for all persons rose from 9.4 per cent to 12.3 per cent over the twelve months. For males the rate went from 9.0 per cent to 12.5 per cent and from 10.0 per cent to 12.0 per cent for females.

Seasonally adjusted, the number of unemployed remained relatively steady. The adjusted unemployment rate rose by only 0.1 of a percentage point to 11.1 per cent over January 1992; this was mainly due to a 25,400 fall in the number of persons in the labour force.

In unadjusted terms the labour force fell from 2,233,700 in February 1991 to 2,226,600 in February 1992.

Youth

The number of full time employed aged 15-19 years fell by 24,200 to 48,000 in the twelve months to February 1992. A small rise in part time employed youths left an overall decline of 22,000 in the number of employed 15-19 year olds to 125,500.

There was a rise of 9,800 unemployed youths to 56,800 over the period February 1991 to February 1992. Youth unemployment in Victoria stood at 31.2 per cent for February 1992.

INQUIRIES

- . for further information about statistics in this publication and the availability of related unpublished statistics, contact Tracy Stewart on Melbourne (03) 615 7000; or any ABS State office.
- . for information about other ABS statistics and services please contact Information Services Melbourne (03) 615 7000; or any ABS State office.

Regions

In the metropolitan area unemployment rose from 157,500 to 203,500 in the year ending February 1992. In rural Victoria unemployment rose 17,600 to 70,600 for the same period.

The North Western Melbourne region had the State's highest unemployment rate of 17.6 per cent (19,500 unemployed persons). Inner Eastern Melbourne had the lowest with 8.2 per cent.

The Mornington Peninsula region had the highest number of unemployed persons: 44,900, and an unemployment rate of 16.0 per cent. Western Victoria had the lowest number of unemployed with 11,300.

Occupation

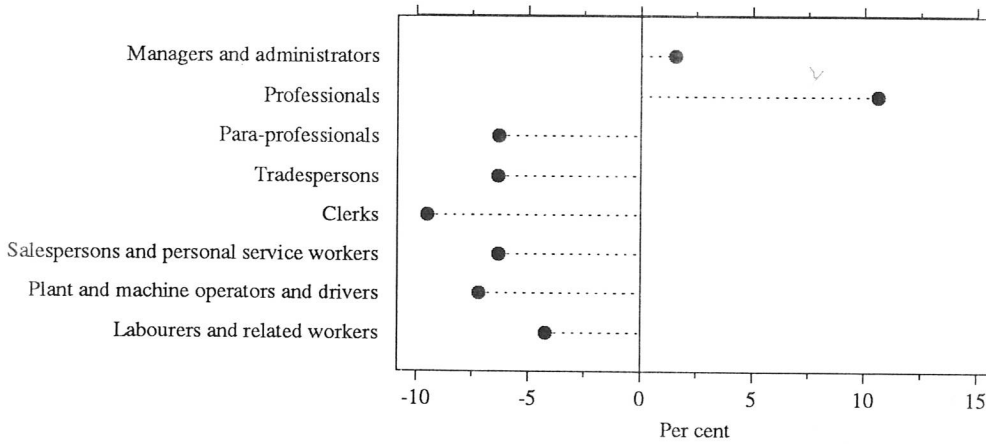
Significant falls in employment were experienced in six of the eight major occupation groups for the period February 1991 to February 1992. The largest fall of 32,900 or 9.5 per cent was among Clerks. Only the Professionals occupation group experienced a significant increase over the period, employment rising there from 263,100 to 291,000.

Industry

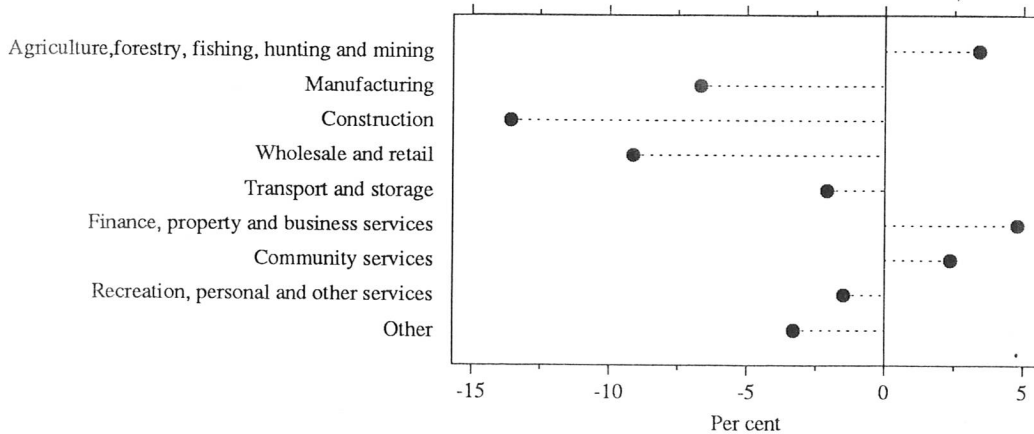
Across Victoria the Wholesale and retail industry was the hardest hit, with the number of employed dropping 39,500 to 393,300 in the twelve months ending February 1992. The Manufacturing and Construction industries also had major employment reductions with drops of 26,000 and 18,500 respectively.

Not all industries had employment losses; Finance, property and business services employed 229,700 persons, up from 219,200 in February 1991. The Community services industry also showed an increase, up 8,300 to 356,700.

**EMPLOYED PERSONS BY OCCUPATION:
ANNUAL PERCENTAGE CHANGE
FEBRUARY 1991 - FEBRUARY 1992**



**EMPLOYED PERSONS BY INDUSTRY:
ANNUAL PERCENTAGE CHANGE
FEBRUARY 1991 - FEBRUARY 1992**



CONTENTS

Table	Page
Graphs	2, 8, 9, 10, 11, 13, 15, 17
Civilian population aged 15 years and over -	
1 Labour force status, time series, original series	4
2 Labour force status, time series, seasonally adjusted series	6
3 Labour force status, time series, trend series	7
4 Labour force status, age, and attendance at an educational institution, February 1992	8
5 Labour force status, birthplace, and period of arrival in Australia, February 1992	9
6 Labour force status and family status, February 1992	10
7 Labour force status by regions, December 1991	12
8 Labour force status by regions, January 1992	14
9 Labour force status by regions, February 1992	16
10 Labour force status and age by regions, February 1992	18
Employed persons -	
11 Industry by regions, February 1992	22
12 Occupation by regions, February 1992	24
13 Industry and occupation by age, February 1992	26
14 Average weekly hours worked by industry, and occupation, February 1992	27
15 Status of worker and hours worked, February 1992	28
Unemployed persons -	
16 Industry and occupation of last job, February 1992	28
17 Duration of unemployment, February 1992	29
Explanatory notes	30
Standard errors -	
A Standard errors of estimates	33
B Standard errors of estimates of month to month movements	34
MAPS	35, 36

**TABLE 1. CIVILIAN POPULATION AGED 15 YEARS AND OVER BY
LABOUR FORCE STATUS, VICTORIA: ORIGINAL SERIES**

Month	Employed		Unemployed			Labour force (<i>'000</i>)	Not in labour force (<i>'000</i>)	Civilian population 15 years and over (<i>'000</i>)	Unemp- loyment rate (per cent)	Partici- pation rate (per cent)
	Full-time (<i>'000</i>)	Total (<i>'000</i>)	Full-time (<i>'000</i>)	Part-time (<i>'000</i>)	Total (<i>'000</i>)					
MALES										
1990 -										
December	1,099.4	1,193.3	90.4	15.7	106.1	1,299.3	396.9	1,696.3	8.2	76.6
1991 -										
January	1,068.9	1,164.3	103.3	11.6	114.9	1,279.2	418.9	1,698.1	9.0	75.3
February	1,071.2	1,170.5	98.4	17.4	115.8	1,286.3	413.7	1,700.0	9.0	75.7
March	1,050.4	1,145.8	102.9	17.9	120.8	1,266.6	435.3	1,701.9	9.5	74.4
April	1,035.2	1,137.8	112.9	20.8	133.7	1,271.6	432.0	1,703.5	10.5	74.6
May	1,035.8	1,135.8	111.3	16.0	127.3	1,263.0	442.1	1,705.1	10.1	74.1
June	1,023.5	1,126.0	119.0	9.9	129.0	1,254.9	451.8	1,706.7	10.3	73.5
July	1,020.3	1,122.0	115.4	12.4	127.8	1,249.8	458.4	1,708.1	10.2	73.2
August	1,020.9	1,120.8	125.3	11.1	136.5	1,257.2	452.3	1,709.5	10.9	73.5
September	1,024.3	1,131.2	133.1	12.8	145.9	1,277.1	433.9	1,710.9	11.4	74.6
October	1,031.7	1,137.9	122.1	8.8	130.9	1,268.8	443.6	1,712.5	10.3	74.1
November	1,009.8	1,120.0	127.6	10.6	138.1	1,258.1	455.9	1,714.0	11.0	73.4
December	1,042.1	1,141.6	138.4	15.9	154.3	1,295.9	419.6	1,715.5	11.9	75.5
1992 -										
January	1,026.0	1,127.4	142.1	12.7	154.9	1,282.2	434.6	1,716.8	12.1	74.7
February	1,016.0	1,126.8	148.2	12.7	161.0	1,287.8	430.3	1,718.0	12.5	75.0
MARRIED FEMALES										
1990 -										
December	282.8	520.6	17.7	9.9	27.6	548.2	451.8	1,000.0	5.0	54.8
1991 -										
January	284.3	495.9	20.1	9.6	29.7	525.6	476.9	1,002.5	5.7	52.4
February	270.4	510.4	24.3	14.5	38.8	549.1	458.0	1,007.2	7.1	54.5
March	277.2	517.0	22.8	13.4	36.2	553.2	464.3	1,017.5	6.5	54.4
April	269.2	507.6	30.2	13.2	43.4	551.0	455.8	1,006.9	7.9	54.7
May	271.2	511.4	25.7	9.5	35.2	546.6	464.7	1,011.3	6.4	54.0
June	275.4	516.9	20.8	13.9	34.7	551.6	469.9	1,021.4	6.3	54.0
July	274.1	511.2	25.8	8.7	34.5	545.7	489.7	1,035.4	6.3	52.7
August	278.0	514.4	23.4	8.6	32.1	546.5	478.7	1,025.2	5.9	53.3
September	284.0	529.9	25.9	11.6	37.5	567.4	459.3	1,026.8	6.6	55.3
October	288.2	514.5	26.8	8.8	35.5	550.1	477.1	1,027.1	6.5	53.6
November	283.1	510.2	26.3	9.9	36.2	546.4	479.8	1,026.2	6.6	53.2
December	286.5	511.2	27.1	11.7	38.9	550.0	480.9	1,030.9	7.1	53.4
1992 -										
January	272.2	487.4	31.7	8.8	40.5	527.9	500.9	1,028.8	7.7	51.3
February	273.8	500.5	32.6	8.4	41.0	541.5	482.3	1,023.8	7.6	52.9
OTHER FEMALES										
1990 -										
December	252.2	361.4	36.1	12.4	48.5	409.9	347.1	757.0	11.8	54.1
1991 -										
January	243.6	343.4	37.6	16.6	54.2	397.5	358.9	756.4	13.6	52.6
February	236.6	342.3	41.2	14.8	55.9	398.3	355.4	753.6	14.0	52.8
March	227.5	334.0	39.8	18.2	58.0	392.1	353.2	745.2	14.8	52.6
April	230.2	339.9	43.1	17.1	60.2	400.1	357.4	757.5	15.1	52.8
May	223.5	332.6	44.0	15.1	59.1	391.7	363.1	754.7	15.1	51.9
June	215.8	327.3	39.7	10.6	50.3	377.6	368.7	746.3	13.3	50.6
July	220.8	321.4	37.0	12.2	49.2	370.6	363.4	734.0	13.3	50.5
August	223.3	336.9	33.4	10.2	43.7	380.6	365.2	745.8	11.5	51.0
September	224.5	338.9	38.6	16.1	54.7	393.6	352.2	745.8	13.9	52.8
October	224.5	332.9	33.9	14.2	48.1	380.9	366.3	747.3	12.6	51.0
November	223.9	334.4	36.6	11.5	48.1	382.5	367.5	750.0	12.6	51.0
December	232.7	347.6	45.3	16.9	62.2	409.8	337.3	747.1	15.2	54.8
1992 -										
January	231.0	336.6	46.9	15.7	62.7	399.3	351.3	750.6	15.7	53.2
February	219.4	325.3	57.3	14.8	72.1	397.3	359.7	757.0	18.1	52.5

**TABLE 1. CIVILIAN POPULATION AGED 15 YEARS AND OVER BY
LABOUR FORCE STATUS, VICTORIA: ORIGINAL SERIES - continued**

Month	Employed		Unemployed			Labour force (<i>'000</i>)	Not in labour force (<i>'000</i>)	Civilian population 15 years and over (<i>'000</i>)	Unemp- loyment rate (per cent)	Partici- pation rate (per cent)
	Full-time (<i>'000</i>)	Total (<i>'000</i>)	Full-time (<i>'000</i>)	Part-time (<i>'000</i>)	Total (<i>'000</i>)					
ALL FEMALES										
1990 -										
December	535.0	882.0	53.8	22.3	76.1	958.1	798.9	1,757.0	7.9	54.5
1991 -										
January	527.9	839.2	57.6	26.2	83.9	923.1	835.8	1,758.9	9.1	52.5
February	506.9	852.7	65.4	29.3	94.7	947.4	813.4	1,760.8	10.0	53.8
March	504.8	851.0	62.7	31.5	94.2	945.2	817.5	1,762.7	10.0	53.6
April	499.4	847.5	73.3	30.3	103.7	951.2	813.2	1,764.4	10.9	53.9
May	494.7	844.0	69.6	24.6	94.2	938.3	827.8	1,766.1	10.0	53.1
June	491.2	844.2	60.4	24.6	85.0	929.2	838.6	1,767.8	9.1	52.6
July	494.8	832.6	62.8	20.9	83.7	916.3	853.1	1,769.4	9.1	51.8
August	501.3	851.3	56.9	18.9	75.7	927.1	843.9	1,771.0	8.2	52.3
September	508.6	868.8	64.5	27.7	92.3	961.1	811.5	1,772.6	9.6	54.2
October	512.7	847.4	60.6	22.9	83.6	931.0	843.4	1,774.4	9.0	52.5
November	507.0	844.6	62.8	21.4	84.3	928.9	847.3	1,776.2	9.1	52.3
December	519.1	858.8	72.4	28.6	101.0	959.8	818.2	1,778.0	10.5	54.0
1992 -										
January	503.2	824.0	78.6	24.5	103.2	927.2	852.2	1,779.4	11.1	52.1
February	493.2	825.8	89.9	23.2	113.0	938.8	842.0	1,780.8	12.0	52.7
PERSONS										
1990 -										
December	1,634.4	2,075.2	144.2	38.0	182.2	2,257.4	1,195.9	3,453.3	8.1	65.4
1991 -										
January	1,596.8	2,003.6	161.0	37.8	198.8	2,202.3	1,254.7	3,457.0	9.0	63.7
February	1,578.1	2,023.2	163.8	46.7	210.5	2,233.7	1,227.1	3,460.8	9.4	64.5
March	1,555.1	1,996.8	165.5	49.5	215.0	2,211.8	1,252.8	3,464.6	9.7	63.8
April	1,534.5	1,985.4	186.3	51.1	237.4	2,222.7	1,245.2	3,467.9	10.7	64.1
May	1,530.5	1,979.8	180.9	40.6	221.5	2,201.3	1,269.9	3,471.2	10.1	63.4
June	1,514.8	1,970.2	179.4	34.5	213.9	2,184.1	1,290.4	3,474.5	9.8	62.9
July	1,515.1	1,954.5	178.2	33.3	211.5	2,166.0	1,311.5	3,477.5	9.8	62.3
August	1,522.2	1,972.1	182.2	30.0	212.2	2,184.3	1,296.2	3,480.5	9.7	62.8
September	1,532.8	2,000.0	197.6	40.5	238.2	2,238.1	1,245.4	3,483.5	10.6	64.2
October	1,544.3	1,985.3	182.8	31.7	214.5	2,199.8	1,287.0	3,486.9	9.8	63.1
November	1,516.8	1,964.6	190.4	32.0	222.4	2,187.0	1,303.2	3,490.2	10.2	62.7
December	1,561.2	2,000.3	210.8	44.6	255.4	2,255.7	1,237.8	3,493.5	11.3	64.6
1992 -										
January	1,529.2	1,951.4	220.7	37.3	258.0	2,209.4	1,286.8	3,496.2	11.7	63.2
February	1,509.2	1,952.6	238.1	35.9	274.0	2,226.6	1,272.2	3,498.8	12.3	63.6

**TABLE 2. CIVILIAN POPULATION AGED 15 YEARS AND OVER BY
LABOUR FORCE STATUS, VICTORIA: SEASONALLY ADJUSTED SERIES**

<i>Month</i>	<i>Employed ('000)</i>	<i>Unemployed ('000)</i>	<i>Labour force ('000)</i>	<i>Unemployment rate (per cent)</i>	<i>Participation rate (per cent)</i>
MALES					
1990 -					
December	1,183.7	98.5	1,282.2	7.7	75.6
1991 -					
January	1,174.1	106.5	1,280.7	8.3	75.4
February	1,168.1	106.4	1,274.4	8.3	75.0
March	1,145.1	119.3	1,264.4	9.4	74.3
April	1,133.6	130.5	1,264.2	10.3	74.2
May	1,132.2	127.8	1,260.0	10.1	73.9
June	1,123.7	136.7	1,260.4	10.8	73.9
July	1,121.5	135.5	1,256.9	10.8	73.6
August	1,127.9	142.7	1,270.6	11.2	74.3
September	1,131.0	145.6	1,276.7	11.4	74.6
October	1,137.1	140.0	1,277.0	11.0	74.6
November	1,126.6	146.2	1,272.8	11.5	74.3
December	1,132.9	143.5	1,276.4	11.2	74.4
1992 -					
January	1,136.8	143.8	1,280.6	11.2	74.6
February	1,124.2	147.8	1,272.0	11.6	74.0
FEMALES					
1990 -					
December	867.0	76.2	943.2	8.1	53.7
1991 -					
January	862.7	82.4	945.1	8.7	53.7
February	861.4	81.1	942.5	8.6	53.5
March	848.9	84.6	933.6	9.1	53.0
April	847.0	94.4	941.4	10.0	53.4
May	844.0	91.9	936.0	9.8	53.0
June	847.2	88.0	935.2	9.4	52.9
July	834.3	88.8	923.1	9.6	52.2
August	853.8	84.0	937.8	9.0	53.0
September	850.7	95.5	946.3	10.1	53.4
October	847.2	91.4	938.7	9.7	52.9
November	841.0	94.9	935.9	10.1	52.7
December	844.6	101.4	946.0	10.7	53.2
1992 -					
January	846.4	100.9	947.4	10.7	53.2
February	833.9	96.7	930.6	10.4	52.3
PERSONS					
1990 -					
December	2,050.7	174.7	2,225.4	7.8	64.4
1991 -					
January	2,036.9	188.9	2,225.8	8.5	64.4
February	2,029.5	187.5	2,217.0	8.5	64.1
March	1,994.1	203.9	2,198.0	9.3	63.4
April	1,980.7	224.9	2,205.6	10.2	63.6
May	1,976.2	219.8	2,196.0	10.0	63.3
June	1,971.0	224.6	2,195.6	10.2	63.2
July	1,955.7	224.3	2,180.0	10.3	62.7
August	1,981.7	226.6	2,208.3	10.3	63.4
September	1,981.8	241.2	2,222.9	10.8	63.8
October	1,984.3	231.4	2,215.7	10.4	63.5
November	1,967.6	241.1	2,208.7	10.9	63.3
December	1,977.5	244.9	2,222.4	11.0	63.6
1992 -					
January	1,983.3	244.8	2,228.0	11.0	63.7
February	1,958.1	244.5	2,202.6	11.1	63.0

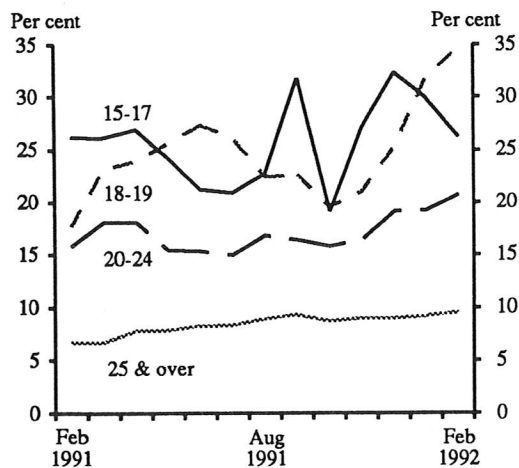
**TABLE 3. CIVILIAN POPULATION AGED 15 YEARS AND OVER BY
LABOUR FORCE STATUS, VICTORIA: TREND SERIES**

<i>Month</i>	<i>Employed ('000)</i>	<i>Unemployed ('000)</i>	<i>Labour force ('000)</i>	<i>Unemployment rate (per cent)</i>	<i>Participation rate (per cent)</i>
MALES					
<i>1990 -</i>					
December	1,181.3	102.3	1,283.6	8.0	75.7
<i>1991 -</i>					
January	1,172.1	107.0	1,279.1	8.4	75.3
February	1,161.2	112.4	1,273.6	8.8	74.9
March	1,149.4	118.2	1,267.7	9.3	74.5
April	1,138.6	124.5	1,263.0	9.9	74.1
May	1,130.5	130.3	1,260.8	10.3	73.9
June	1,126.2	135.1	1,261.3	10.7	73.9
July	1,125.2	138.6	1,263.8	11.0	74.0
August	1,126.7	141.0	1,267.6	11.1	74.2
September	1,129.1	142.4	1,271.5	11.2	74.3
October	1,131.0	143.4	1,274.5	11.3	74.4
November	1,132.0	144.1	1,276.1	11.3	74.5
December	1,132.0	144.7	1,276.7	11.3	74.4
<i>1992 -</i>					
January	1,131.5	145.4	1,276.9	11.4	74.4
February	1,130.5	145.7	1,276.2	11.4	74.3
FEMALES					
<i>1990 -</i>					
December	865.8	78.7	944.4	8.3	53.8
<i>1991 -</i>					
January	862.3	81.3	943.7	8.6	53.7
February	857.7	84.3	942.0	8.9	53.5
March	852.5	86.8	939.3	9.2	53.3
April	847.9	88.5	936.4	9.5	53.1
May	845.2	89.5	934.7	9.6	52.9
June	844.5	89.6	934.0	9.6	52.8
July	844.9	89.3	934.3	9.6	52.8
August	846.1	89.7	935.8	9.6	52.8
September	846.9	91.1	938.1	9.7	52.9
October	846.7	93.4	940.1	9.9	53.0
November	845.5	95.9	941.3	10.2	53.0
December	843.7	97.8	941.5	10.4	53.0
<i>1992 -</i>					
January	841.8	99.2	941.1	10.5	52.9
February	839.1	100.3	939.4	10.7	52.8
PERSONS					
<i>1990 -</i>					
December	2,047.1	180.9	2,228.0	8.1	64.5
<i>1991 -</i>					
January	2,034.4	188.4	2,222.7	8.5	64.3
February	2,018.9	196.7	2,215.6	8.9	64.0
March	2,001.9	205.1	2,207.0	9.3	63.7
April	1,986.4	213.0	2,199.5	9.7	63.4
May	1,975.8	219.8	2,195.5	10.0	63.3
June	1,970.6	224.7	2,195.3	10.2	63.2
July	1,970.1	227.9	2,198.1	10.4	63.2
August	1,972.8	230.7	2,203.5	10.5	63.3
September	1,976.1	233.5	2,209.6	10.6	63.4
October	1,977.7	236.9	2,214.6	10.7	63.5
November	1,977.4	240.0	2,217.4	10.8	63.5
December	1,975.7	242.5	2,218.2	10.9	63.5
<i>1992 -</i>					
January	1,973.4	244.6	2,218.0	11.0	63.4
February	1,969.6	246.0	2,215.6	11.1	63.3

TABLE 4. CIVILIAN POPULATION AGED 15 YEARS AND OVER BY LABOUR FORCE STATUS, AGE, AND ATTENDANCE AT AN EDUCATIONAL INSTITUTION, VICTORIA, FEBRUARY 1992

Particulars	Employed			Unemp- loyed ('000)	Labour force ('000)	Not in labour force ('000)	Unemp- loyment rate (per cent)	Partici- pation rate (per cent)
	Full- time ('000)	Part- time ('000)	Total ('000)					
Age (years) -								
15 - 19								
15 - 17	10.5	45.5	56.0	20.8	76.8	117.2	27.1	39.6
18 - 19	37.5	32.0	69.5	36.0	105.6	37.8	34.1	73.6
Attending school	*0.5	37.3	37.8	11.8	49.6	118.4	23.8	29.5
Not attending school -								
Left before 1987	*0.3	*0.0	*0.3	*0.0	*0.3	*0.0	*0.0	*100.0
Left from 1987 to survey date	47.2	40.3	87.4	45.0	132.5	35.5	34.0	78.9
Total aged 15 - 19 years	48.0	77.6	125.5	56.8	182.4	155.0	31.2	54.1
Age (years) -								
20 - 24	207.0	44.5	251.6	65.9	317.4	57.6	20.8	84.7
25 - 34	441.0	89.3	530.4	62.0	592.4	132.1	10.5	81.8
35 - 44	395.0	112.3	507.3	47.4	554.7	114.3	8.5	82.9
45 - 54	284.4	68.4	352.7	27.4	380.1	115.7	7.2	76.7
55 and over	133.8	51.3	185.1	14.5	199.6	697.5	7.3	22.3
Attending tertiary educational institution full-time								
Age (years) -								
15 - 19	*2.9	19.6	22.5	9.0	31.6	23.5	28.7	57.3
20 - 24	5.5	18.0	23.5	8.0	31.5	21.1	25.5	59.9

UNEMPLOYMENT RATES OF MALES BY AGE GROUP, VICTORIA



UNEMPLOYMENT RATES OF FEMALES BY AGE GROUP, VICTORIA

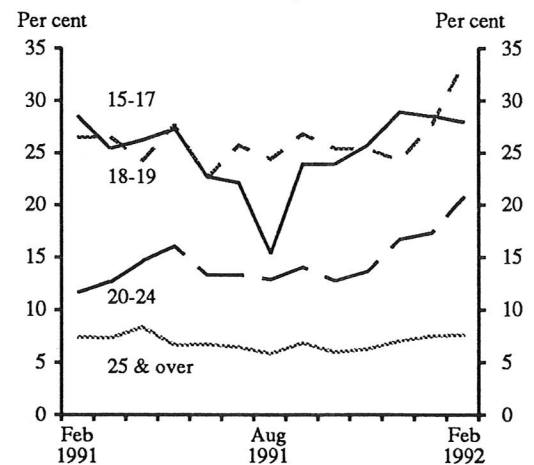


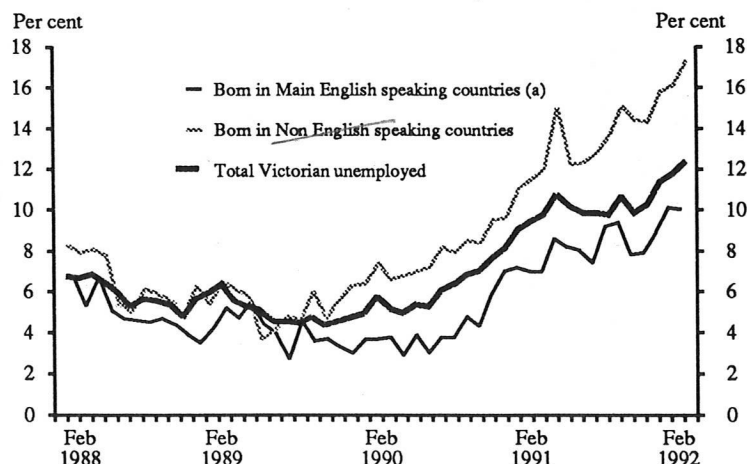
TABLE 5. CIVILIAN POPULATION AGED 15 YEARS AND OVER BY LABOUR FORCE STATUS, BIRTHPLACE, AND PERIOD OF ARRIVAL IN AUSTRALIA, VICTORIA, FEBRUARY 1992

<i>Birthplace particulars (b)</i>	<i>Employed</i>			<i>Unemp- loyed ('000)</i>	<i>Labour force ('000)</i>	<i>Not in labour force ('000)</i>	<i>Unemp- loyment rate (per cent)</i>	<i>Partici- pation rate (a) (per cent)</i>
	<i>Full- time ('000)</i>	<i>Part- time ('000)</i>	<i>Total ('000)</i>					
Born in Australia	1,079.7	340.3	1,420.0	179.6	1,599.7	831.8	11.2	65.8
Born outside Australia -								
Africa	12.0	*2.3	14.3	*1.3	15.5	5.7	*8.1	73.0
America	14.9	5.0	19.9	*3.7	23.6	10.3	*15.5	69.5
Asia	66.8	15.8	82.6	23.6	106.2	52.0	22.2	67.2
The Middle East and North Africa	18.8	*4.4	23.2	8.1	31.3	22.2	25.8	58.5
Europe -								
Germany	13.1	*4.3	17.4	*2.5	19.9	9.8	*12.5	67.1
Greece	36.2	7.4	43.5	7.8	51.4	30.4	15.3	62.8
Italy	41.3	6.6	47.9	5.6	53.5	63.3	10.4	45.8
Malta	13.8	*3.2	17.1	*2.4	19.5	12.1	*12.3	61.7
Netherlands	12.6	*3.3	15.9	*0.8	16.7	11.2	*4.7	59.8
Poland	8.7	*2.3	11.0	*1.8	12.9	12.1	*14.3	51.6
UK and Ireland	103.0	32.8	135.8	13.6	149.4	86.9	9.1	63.2
Yugoslavia	34.5	4.6	39.1	9.6	48.7	21.0	19.7	69.8
Other Europe	31.7	6.6	38.3	7.9	46.2	32.0	17.2	59.1
Total Europe	294.9	71.1	366.0	52.1	418.1	278.8	12.5	60.0
New Zealand	18.9	*4.3	23.2	4.7	27.9	8.8	16.8	76.0
Total Oceania	20.7	*4.3	25.0	5.4	30.4	10.3	17.8	74.7
Main English speaking countries (c)	134.3	41.9	176.2	19.6	195.8	100.1	10.0	66.2
Other	295.1	61.3	356.4	74.8	431.1	281.8	17.3	60.5
Period of arrival -								
Before 1961	102.2	28.2	130.4	9.9	140.2	164.4	7.0	46.0
1961 - 1965	49.6	10.1	59.7	6.7	66.4	41.1	10.1	61.8
1966 - 1970	78.5	15.5	93.9	16.2	110.2	47.3	14.7	70.0
1971 - 1975	54.2	13.7	67.9	11.7	79.6	27.6	14.7	74.3
1976 - 1980	45.1	11.3	56.4	8.8	65.2	26.8	13.6	70.9
1981 - 1985	38.1	9.0	47.1	10.3	57.4	23.2	17.9	71.2
1986 to survey date	61.7	15.5	77.2	30.7	108.0	51.6	28.5	67.6
Total overseas born	429.4	103.1	532.6	94.4	626.9	381.9	15.1	62.1

(a) Because it is not practicable to ascertain the birthplace of persons in institutions (who are classified as 'not in the labour force'), labour force participation rates for persons classified by birthplace are calculated by using population estimates which exclude those in institutions.

(b) Country of birth data are now grouped according to the Australian Standard Classification of Countries for Social Statistics. See Explanatory Notes for more details. (c) Comprises United Kingdom and Ireland, Canada, United States of America, South Africa and New Zealand.

**UNEMPLOYMENT RATES OF MIGRANTS (BY BIRTHPLACE)
AND TOTAL UNEMPLOYED, VICTORIA**



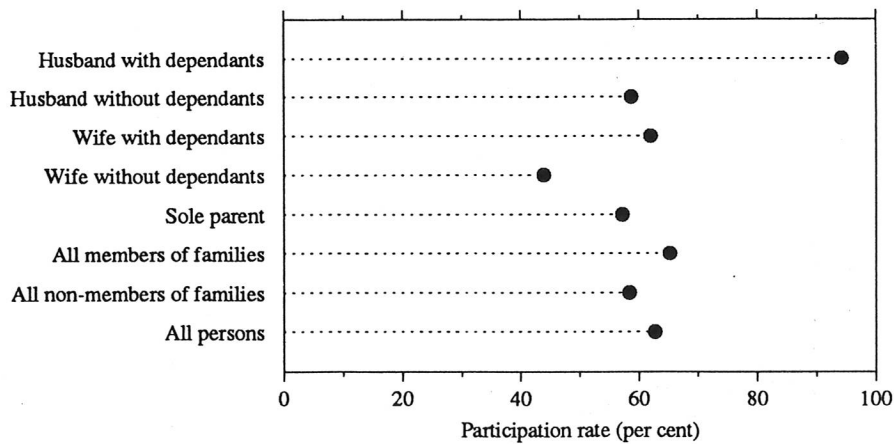
(a) Comprises United Kingdom and Ireland, Canada, United States of America, South Africa, and New Zealand.

TABLE 6. CIVILIAN POPULATION AGED 15 YEARS AND OVER BY LABOUR FORCE STATUS AND FAMILY STATUS, VICTORIA, FEBRUARY 1992

Family status	Employed				Labour force ('000)	Not in labour force ('000)	Civilian population 15 years and over ('000)	Unemployment rate (per cent)	Participation rate (per cent)
	Full-time ('000)	Part-time ('000)	Total ('000)	Unemployed ('000)					
Member of a family -									
Married -									
Husband -									
With children (a)	376.9	13.1	390.1	39.8	429.8	20.2	450.0	9.2	95.5
Without children (a)	311.4	27.3	338.7	28.1	366.8	203.2	570.0	7.7	64.3
Wife -									
With children (a)	99.4	128.3	227.7	22.7	250.4	170.5	420.9	9.1	59.5
Without children (a)	162.8	93.2	256.0	16.9	273.0	296.3	569.3	6.2	47.9
Not-married family head -									
Male -									
With children (a)	*2.7	*1.0	*3.7	*0.0	*3.7	*1.8	5.5	*0.0	*66.7
Without children (a)	14.5	*1.1	15.5	*2.2	17.7	7.6	25.3	*12.4	70.0
Female -									
With children (a)	14.5	16.1	30.6	7.9	38.5	36.2	74.8	20.5	51.5
Without children (a)	17.5	7.5	25.1	*1.8	26.8	37.2	64.0	*6.7	41.9
Child of family head (b) -									
Males									
Males	142.8	46.1	188.9	54.8	243.7	96.1	339.9	22.5	71.7
Females									
Females	86.1	57.1	143.3	41.8	185.1	80.0	265.1	22.6	69.8
Other relative of family head	16.4	*2.6	19.1	6.3	25.4	30.7	56.0	24.8	45.2
Total	1,245.1	393.5	1,638.6	222.3	1,860.9	980.0	2,840.9	11.9	65.5
Not a member of a family -									
Living alone -									
Males									
Males	61.8	8.8	70.6	7.5	78.1	42.7	120.8	9.6	64.7
Females									
Females	41.8	7.2	48.9	*4.0	52.9	121.8	174.7	*7.5	30.3
Not living alone -									
Males									
Males	68.1	7.6	75.8	17.6	93.4	15.7	109.0	18.8	85.6
Females									
Females	43.5	11.1	54.6	10.4	65.0	15.0	80.0	16.0	81.2
Total	215.2	34.7	249.9	39.5	289.4	195.2	484.5	13.6	59.7
Not family coded	48.8	15.3	64.1	12.3	76.4	97.1	173.5	16.1	44.0
Total	1,509.2	443.4	1,952.6	274.0	2,226.6	1,272.2	3,498.8	12.3	63.6

(a) Aged 0 - 14 present in household. (b) Aged 15 and over.

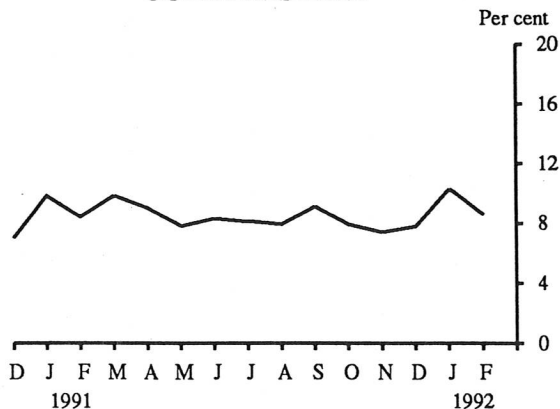
PARTICIPATION RATES BY FAMILY STATUS, VICTORIA, FEBRUARY 1992



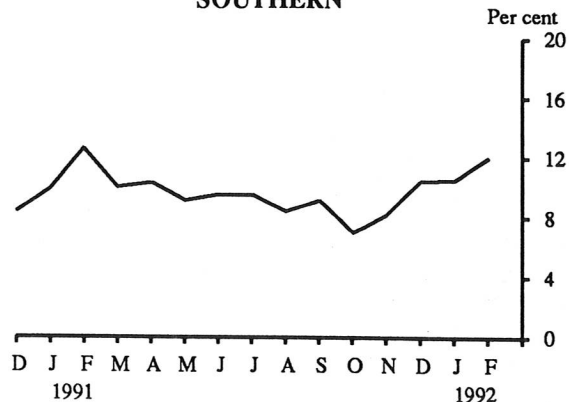
MELBOURNE STATISTICAL DIVISION LABOUR FORCE REGIONS

(UNEMPLOYMENT RATE)

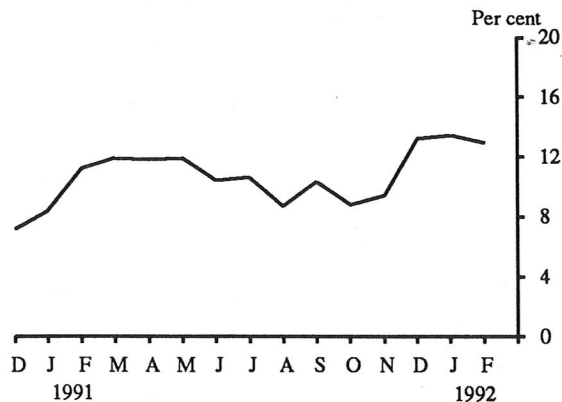
OUTER EASTERN



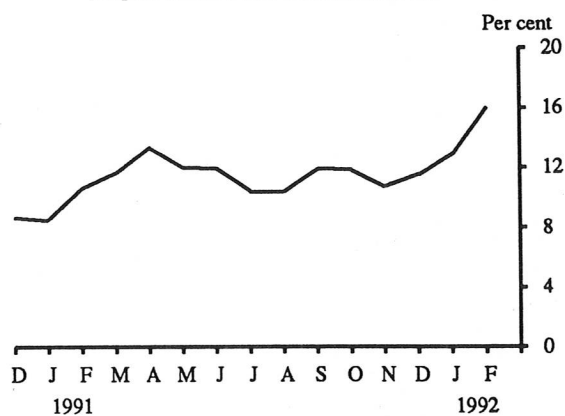
SOUTHERN



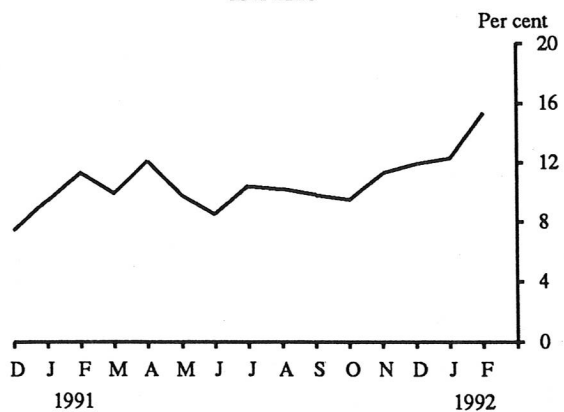
NORTH EASTERN



MORNINGTON PENINSULA



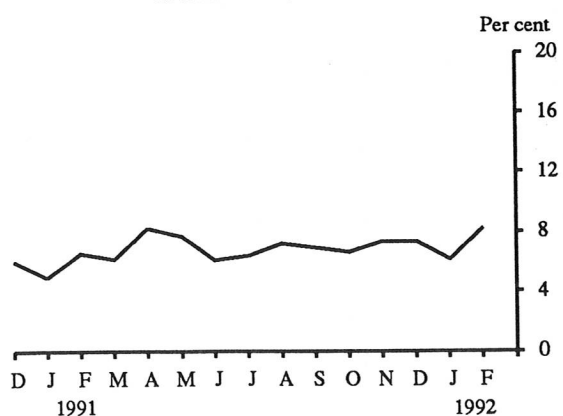
INNER



NORTH WESTERN



INNER EASTERN



OUTER WESTERN

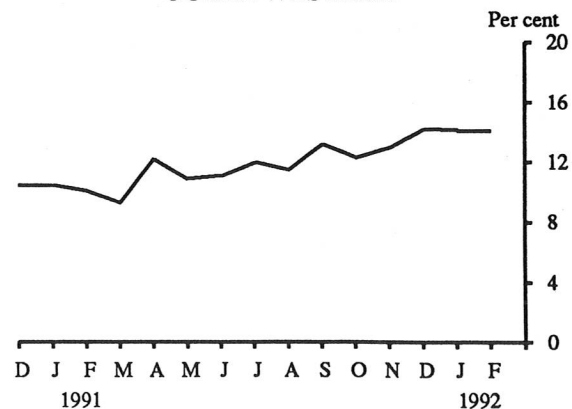


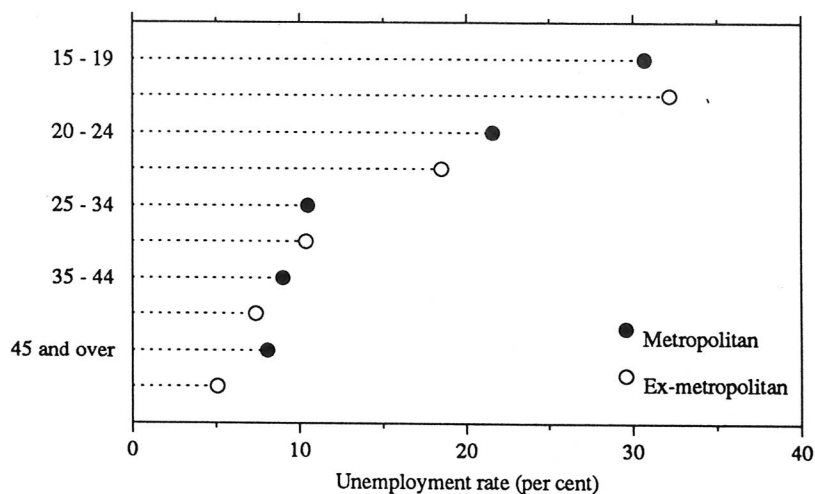
TABLE 7. CIVILIAN POPULATION AGED 15 YEARS AND OVER BY LABOUR FORCE STATUS,
VICTORIAN REGIONS, DECEMBER 1991

Region	Employed			Unemp- loyed (<i>'000</i>)	Labour force (<i>'000</i>)	Not in labour force (<i>'000</i>)	Unemp- loyment rate (per cent)	Partici- pation rate (per cent)
	Full- time (<i>'000</i>)	Part- time (<i>'000</i>)	Total (<i>'000</i>)					
MALES								
Melbourne Statistical Division-	741.0	67.7	808.7	110.2	918.9	296.6	12.0	75.6
Outer Western Melbourne	111.9	5.9	117.8	17.9	135.7	49.3	13.2	73.3
North Western Melbourne	48.6	*2.3	50.9	12.1	63.0	24.4	19.2	72.1
Inner Melbourne	57.6	7.9	65.5	9.3	74.8	21.1	12.4	78.0
North Eastern Melbourne	88.7	7.2	95.9	19.1	115.0	37.3	16.6	75.5
Inner Eastern Melbourne	104.6	12.9	117.5	10.1	127.6	40.2	7.9	76.0
Southern Melbourne	80.4	8.1	88.5	11.2	99.7	37.0	11.2	72.9
Outer Eastern Melbourne	116.1	11.3	127.4	10.7	138.1	34.1	7.8	80.2
Mornington Peninsula	133.1	12.1	145.2	19.8	165.0	53.1	12.0	75.7
Balance of Victoria-	301.1	31.8	332.9	44.2	377.0	123.0	11.7	75.4
South Western Victoria	78.5	6.8	85.3	13.1	98.4	30.4	13.3	76.4
Western Victoria	61.7	7.9	69.6	7.0	76.6	25.0	9.2	75.4
Northern Victoria	95.0	11.0	106.0	18.7	124.7	45.4	15.0	73.3
Eastern Victoria	65.9	6.0	71.9	5.4	77.4	22.2	7.0	77.7
Total	1,042.1	99.5	1,141.6	154.3	1,295.9	419.6	11.9	75.5
MARRIED FEMALES								
Melbourne Statistical Division-	209.7	150.8	360.5	28.8	389.3	328.4	7.4	54.2
Outer Western Melbourne	32.2	19.1	51.3	7.0	58.3	54.5	12.0	51.7
North Western Melbourne	12.6	8.6	21.1	*2.5	23.6	27.1	*10.6	46.6
Inner Melbourne	12.0	5.8	17.8	*2.5	20.3	11.2	*12.4	64.6
North Eastern Melbourne	26.3	18.7	45.0	*2.3	47.2	47.4	*4.8	49.9
Inner Eastern Melbourne	32.7	21.7	54.4	*2.2	56.6	48.3	*4.0	54.0
Southern Melbourne	23.8	18.0	41.8	*3.2	45.0	37.8	*7.2	54.4
Outer Eastern Melbourne	31.2	25.9	57.1	*1.8	58.9	43.6	*3.0	57.5
Mornington Peninsula	39.0	33.0	72.0	7.2	79.2	58.5	9.1	57.5
Balance of Victoria-	76.7	73.9	150.7	10.1	160.7	152.5	6.3	51.3
South Western Victoria	18.1	20.0	38.1	*2.8	40.9	37.8	*6.8	52.0
Western Victoria	18.7	12.9	31.6	*2.2	33.8	28.0	*6.6	54.8
Northern Victoria	23.9	25.8	49.7	*3.6	53.3	55.2	*6.8	49.1
Eastern Victoria	16.1	15.2	31.2	*1.5	32.7	31.5	*4.5	50.9
Total	286.5	224.7	511.2	38.9	550.0	480.9	7.1	53.4
ALL FEMALES								
Melbourne Statistical Division-	395.7	235.3	630.9	72.3	703.3	564.8	10.3	55.5
Outer Western Melbourne	55.7	30.0	85.7	15.8	101.5	85.3	15.5	54.3
North Western Melbourne	27.6	13.8	41.4	7.2	48.6	44.3	14.8	52.3
Inner Melbourne	39.1	14.2	53.4	6.8	60.1	30.9	11.3	66.0
North Eastern Melbourne	48.7	26.2	74.9	6.9	81.7	74.9	8.4	52.2
Inner Eastern Melbourne	66.2	38.6	104.8	7.3	112.1	89.5	6.5	55.6
Southern Melbourne	46.6	25.7	72.3	7.5	79.8	75.8	9.4	51.3
Outer Eastern Melbourne	51.2	38.4	89.6	7.7	97.3	70.5	7.9	58.0
Mornington Peninsula	60.6	48.3	108.8	13.2	122.1	93.6	10.8	56.6
Balance of Victoria-	123.5	104.4	227.9	28.7	256.6	253.4	11.2	50.3
South Western Victoria	32.0	30.3	62.3	8.2	70.6	61.9	11.7	53.3
Western Victoria	30.3	19.8	50.1	7.2	57.3	51.7	12.6	52.6
Northern Victoria	39.2	33.2	72.4	10.3	82.7	88.1	12.5	48.4
Eastern Victoria	22.0	21.0	43.0	*2.9	46.0	51.8	*6.4	47.0
Total	519.1	339.6	858.8	101.0	959.8	818.2	10.5	54.0

TABLE 7. CIVILIAN POPULATION AGED 15 YEARS AND OVER BY LABOUR FORCE STATUS, VICTORIAN REGIONS, DECEMBER 1991 - continued

Region	Employed			Unemp- loyed (<i>'000</i>)	Labour force (<i>'000</i>)	Not in labour force (<i>'000</i>)	Unemp- loyment rate (per cent)	Partici- pation rate (per cent)
	Full- time (<i>'000</i>)	Part- time (<i>'000</i>)	Total (<i>'000</i>)					
PERSONS								
Melbourne Statistical Division-	1,136.6	303.0	1,439.6	182.5	1,622.1	861.4	11.3	65.3
Outer Western Melbourne	167.6	36.0	203.6	33.6	237.2	134.6	14.2	63.8
North Western Melbourne	76.1	16.1	92.2	19.3	111.6	68.7	17.3	61.9
Inner Melbourne	96.7	22.1	118.8	16.1	134.9	52.0	11.9	72.2
North Eastern Melbourne	137.4	33.5	170.8	25.9	196.7	112.2	13.2	63.7
Inner Eastern Melbourne	170.8	51.5	222.3	17.4	239.7	129.8	7.3	64.9
Southern Melbourne	127.0	33.8	160.8	18.7	179.5	112.9	10.4	61.4
Outer Eastern Melbourne	167.3	49.7	217.0	18.4	235.5	104.7	7.8	69.2
Mornington Peninsula	193.7	60.3	254.0	33.0	287.0	146.6	11.5	66.2
Balance of Victoria-	424.6	136.2	560.7	72.9	633.6	376.4	11.5	62.7
South Western Victoria	110.5	37.2	147.7	21.3	169.0	92.2	12.6	64.7
Western Victoria	92.0	27.8	119.7	14.2	133.9	76.7	10.6	63.6
Northern Victoria	134.2	44.2	178.4	29.0	207.4	133.5	14.0	60.8
Eastern Victoria	87.9	27.1	115.0	8.4	123.3	74.0	6.8	62.5
Total	1,561.2	439.1	2,000.4	255.4	2,255.7	1,237.8	11.3	64.6

UNEMPLOYMENT RATES: METROPOLITAN AND EX-METROPOLITAN AREAS BY AGE GROUP, VICTORIA, FEBRUARY 1992



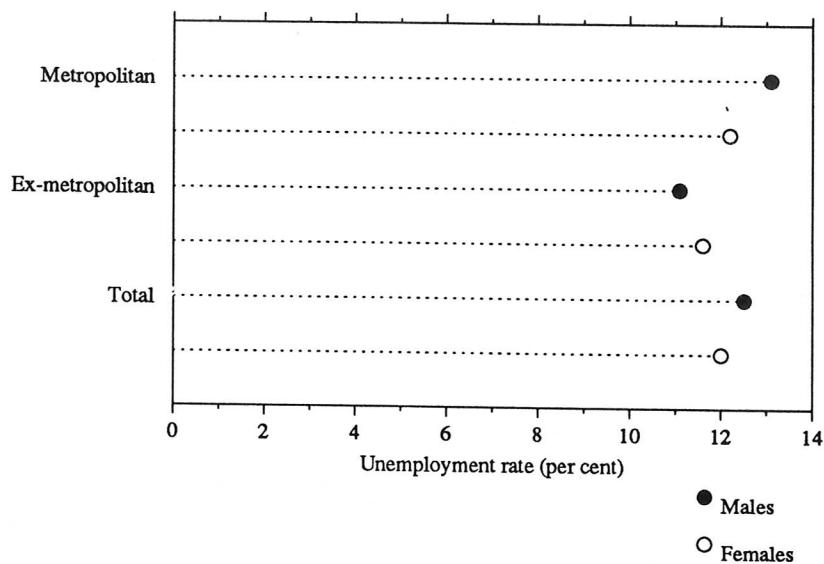
**TABLE 8. CIVILIAN POPULATION AGED 15 YEARS AND OVER BY LABOUR FORCE STATUS,
VICTORIAN REGIONS, JANUARY 1992**

Region	Employed			Unemp- loyed ('000)	Labour force ('000)	Not in labour force ('000)	Unemp- loyment rate (per cent)	Partici- pation rate (per cent)
	Full- time ('000)	Part- time ('000)	Total ('000)					
MALES								
Melbourne Statistical Division-	727.7	67.1	794.8	113.7	908.4	307.7	12.5	74.7
Outer Western Melbourne	115.5	7.5	123.0	17.2	140.2	46.5	12.3	75.1
North Western Melbourne	45.4	*2.6	48.0	13.0	61.1	22.9	21.3	72.8
Inner Melbourne	53.5	7.6	61.1	8.8	69.9	21.5	12.6	76.4
North Eastern Melbourne	91.5	5.3	96.7	18.8	115.6	40.0	16.3	74.3
Inner Eastern Melbourne	104.6	12.4	117.0	8.3	125.3	41.3	6.6	75.2
Southern Melbourne	76.3	6.6	82.9	10.2	93.2	39.4	11.0	70.3
Outer Eastern Melbourne	112.9	12.9	125.8	15.2	141.0	39.0	10.8	78.3
Mornington Peninsula	128.0	12.2	140.2	22.0	162.2	57.1	13.6	74.0
Balance of Victoria-	298.3	34.3	332.6	41.2	373.8	126.9	11.0	74.7
South Western Victoria	75.2	9.6	84.8	12.7	97.5	30.3	13.0	76.3
Western Victoria	62.2	8.1	70.4	5.4	75.7	23.4	7.1	76.4
Northern Victoria	99.9	10.7	110.6	16.5	127.2	48.4	13.0	72.4
Eastern Victoria	60.9	5.9	66.8	6.6	73.4	24.8	9.0	74.8
Total	1,026.0	101.4	1,127.4	154.9	1,282.2	434.6	12.1	74.7
MARRIED FEMALES								
Melbourne Statistical Division-	197.6	142.4	340.0	30.2	370.2	343.3	8.2	51.9
Outer Western Melbourne	30.3	19.6	49.9	5.8	55.7	60.3	10.5	48.0
North Western Melbourne	14.2	5.6	19.8	*2.8	22.6	27.0	*12.5	45.6
Inner Melbourne	9.9	5.1	15.0	*2.5	17.6	13.2	*14.3	57.1
North Eastern Melbourne	28.9	15.1	43.9	3.6	47.5	48.5	7.5	49.5
Inner Eastern Melbourne	31.3	21.5	52.8	*1.7	54.5	47.1	*3.1	53.6
Southern Melbourne	23.2	18.4	41.6	*2.8	44.4	36.8	*6.4	54.7
Outer Eastern Melbourne	25.2	25.5	50.6	*3.5	54.2	47.0	*6.5	53.5
Mornington Peninsula	34.6	31.6	66.3	7.4	73.7	63.4	10.1	53.8
Balance of Victoria-	74.6	72.8	147.4	10.3	157.6	157.6	6.5	50.0
South Western Victoria	16.3	21.2	37.5	*3.1	40.6	37.4	*7.7	52.0
Western Victoria	15.9	12.9	28.8	*1.1	29.9	31.8	*3.7	48.5
Northern Victoria	23.9	25.1	49.0	4.6	53.6	57.8	8.6	48.1
Eastern Victoria	18.5	13.6	32.1	*1.4	33.5	30.6	*4.2	52.3
Total	272.2	215.2	487.4	40.5	527.9	500.9	7.7	51.3
ALL FEMALES								
Melbourne Statistical Division-	380.2	221.4	601.6	74.4	676.0	592.8	11.0	53.3
Outer Western Melbourne	53.9	29.5	83.4	16.6	99.9	89.8	16.6	52.7
North Western Melbourne	29.1	11.5	40.5	7.6	48.1	45.6	15.7	51.4
Inner Melbourne	39.0	12.1	51.1	7.0	58.1	32.1	12.1	64.4
North Eastern Melbourne	52.2	23.1	75.3	7.8	83.1	78.8	9.4	51.3
Inner Eastern Melbourne	62.2	37.3	99.5	5.7	105.2	86.4	5.4	54.9
Southern Melbourne	42.9	24.3	67.2	7.3	74.5	78.5	9.8	48.7
Outer Eastern Melbourne	46.1	39.2	85.3	8.9	94.2	78.3	9.5	54.6
Mornington Peninsula	55.0	44.3	99.3	13.5	112.8	103.3	12.0	52.2
Balance of Victoria-	123.0	99.5	222.5	28.7	251.2	259.4	11.4	49.2
South Western Victoria	29.3	30.6	59.9	9.7	69.6	59.8	14.0	53.8
Western Victoria	27.3	19.0	46.3	5.2	51.5	55.6	10.1	48.1
Northern Victoria	41.0	32.2	73.2	10.8	84.0	93.4	12.9	47.4
Eastern Victoria	25.4	17.7	43.0	*3.0	46.0	50.6	*6.5	47.6
Total	503.2	320.8	824.0	103.2	927.2	852.2	11.1	52.1

TABLE 8. CIVILIAN POPULATION AGED 15 YEARS AND OVER BY LABOUR FORCE STATUS, VICTORIAN REGIONS, JANUARY 1992 - *continued*

Region	Employed			Unemp- loyed (<i>'000</i>)	Labour force (<i>'000</i>)	Not in labour force (<i>'000</i>)	Unemp- loyment rate (per cent)	Partici- pation rate (per cent)
	Full- time (<i>'000</i>)	Part- time (<i>'000</i>)	Total (<i>'000</i>)					
PERSONS								
Melbourne Statistical Division-	1,107.9	288.4	1,396.3	188.1	1,584.4	900.5	11.9	63.8
Outer Western Melbourne	169.3	37.0	206.4	33.8	240.2	136.3	14.1	63.8
North Western Melbourne	74.5	14.1	88.6	20.6	109.2	68.4	18.9	61.5
Inner Melbourne	92.5	19.7	112.2	15.8	128.0	53.6	12.3	70.5
North Eastern Melbourne	143.6	28.4	172.0	26.7	198.7	118.8	13.4	62.6
Inner Eastern Melbourne	166.8	49.7	216.5	14.1	230.5	127.8	6.1	64.3
Southern Melbourne	119.2	30.9	150.1	17.5	167.7	117.9	10.5	58.7
Outer Eastern Melbourne	159.0	52.2	211.1	24.2	235.3	117.3	10.3	66.7
Mornington Peninsula	183.0	56.4	239.5	35.5	275.0	160.4	12.9	63.2
Balance of Victoria-	421.3	133.8	555.1	69.9	625.0	386.3	11.2	61.8
South Western Victoria	104.5	40.2	144.7	22.4	167.1	90.1	13.4	65.0
Western Victoria	89.5	27.1	116.7	10.6	127.3	79.0	8.3	61.7
Northern Victoria	141.0	42.9	183.9	27.3	211.2	141.8	12.9	59.8
Eastern Victoria	86.2	23.6	109.8	9.6	119.4	75.3	8.0	61.3
Total	1,529.2	422.2	1,951.4	258.0	2,209.4	1,286.8	11.7	63.2

UNEMPLOYMENT RATES: METROPOLITAN AND EX-METROPOLITAN AREAS BY GENDER, VICTORIA, FEBRUARY 1992



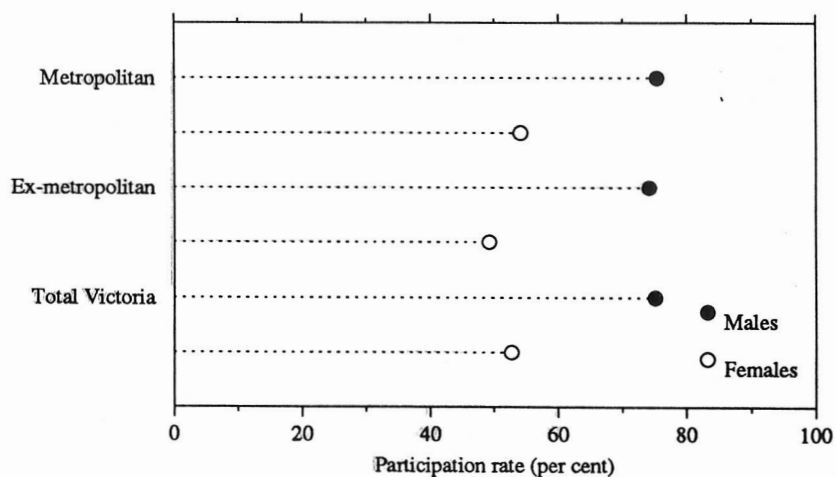
**TABLE 9. CIVILIAN POPULATION AGED 15 YEARS AND OVER BY LABOUR FORCE STATUS,
VICTORIAN REGIONS, FEBRUARY 1992**

Region	Employed			Unemp- loyed (<i>'000</i>)	Labour force (<i>'000</i>)	Not in labour force (<i>'000</i>)	Unemp- loyment rate (per cent)	Partici- pation rate (per cent)
	Full- time (<i>'000</i>)	Part- time (<i>'000</i>)	Total (<i>'000</i>)					
MALES								
Melbourne Statistical Division-	721.3	75.5	796.9	119.6	916.5	300.3	13.1	75.3
Outer Western Melbourne	110.7	7.5	118.2	16.4	134.6	45.2	12.2	74.9
North Western Melbourne	48.7	3.1	51.7	11.2	62.9	23.3	17.8	73.0
Inner Melbourne	50.7	8.9	59.6	10.1	69.7	22.3	14.5	75.8
North Eastern Melbourne	88.1	9.4	97.5	18.2	115.8	36.9	15.7	75.8
Inner Eastern Melbourne	105.3	13.8	119.1	11.7	130.8	44.7	8.9	74.5
Southern Melbourne	78.2	9.0	87.2	11.9	99.0	36.5	12.0	73.0
Outer Eastern Melbourne	112.3	12.9	125.1	11.7	136.8	36.5	8.5	78.9
Mornington Peninsula	127.4	11.0	138.4	28.4	166.8	55.0	17.0	75.2
Balance of Victoria-	294.6	35.3	329.9	41.4	371.3	130.0	11.1	74.1
South Western Victoria	72.4	7.1	79.5	12.4	91.9	32.8	13.4	73.7
Western Victoria	60.9	7.1	68.0	4.7	72.7	29.2	6.4	71.3
Northern Victoria	98.7	13.1	111.7	15.8	127.5	46.4	12.4	73.3
Eastern Victoria	62.6	8.0	70.6	8.5	79.2	21.6	10.8	78.5
Total	1,016.0	110.8	1,126.8	161.0	1,287.8	430.3	12.5	75.0
MARRIED FEMALES								
Melbourne Statistical Division-	200.3	151.2	351.5	32.5	384.0	328.4	8.5	53.9
Outer Western Melbourne	27.5	22.6	50.2	6.1	56.3	56.8	10.9	49.8
North Western Melbourne	13.2	8.1	21.4	3.0	24.4	25.0	12.3	49.3
Inner Melbourne	9.4	4.9	14.3	*2.5	16.8	14.2	*15.1	54.1
North Eastern Melbourne	28.8	20.9	49.7	*3.4	53.1	42.9	*6.4	55.3
Inner Eastern Melbourne	31.2	21.9	53.1	*2.2	55.3	48.9	*4.0	53.1
Southern Melbourne	23.4	18.9	42.3	*3.8	46.1	34.9	*8.3	56.9
Outer Eastern Melbourne	29.1	25.5	54.6	*2.7	57.3	43.6	*4.7	56.8
Mornington Peninsula	37.8	28.3	66.0	8.7	74.7	62.1	11.6	54.6
Balance of Victoria-	73.5	75.5	149.0	8.5	157.5	153.9	5.4	50.6
South Western Victoria	17.5	20.4	37.9	*2.3	40.2	35.7	*5.8	53.0
Western Victoria	14.9	14.3	29.2	*1.2	30.4	33.3	*4.1	47.7
Northern Victoria	25.5	24.2	49.7	*3.1	52.8	57.5	*5.8	47.9
Eastern Victoria	15.6	16.7	32.3	*1.9	34.1	27.3	*5.5	55.5
Total	273.8	226.7	500.5	41.0	541.5	482.3	7.6	52.9
ALL FEMALES								
Melbourne Statistical Division-	374.1	229.1	603.3	83.8	687.1	582.5	12.2	54.1
Outer Western Melbourne	49.0	32.6	81.5	16.4	97.9	86.9	16.7	53.0
North Western Melbourne	26.5	13.1	39.6	8.3	47.9	46.3	17.2	50.8
Inner Melbourne	30.9	12.2	43.1	8.4	51.5	31.6	16.3	62.0
North Eastern Melbourne	50.8	30.1	80.9	8.2	89.0	76.1	9.2	53.9
Inner Eastern Melbourne	61.1	37.1	98.2	7.6	105.8	91.8	7.2	53.6
Southern Melbourne	48.0	25.9	73.9	10.2	84.1	73.3	12.1	53.4
Outer Eastern Melbourne	49.9	38.5	88.4	8.4	96.8	75.7	8.7	56.1
Mornington Peninsula	58.0	39.7	97.7	16.4	114.1	100.8	14.4	53.1
Balance of Victoria-	119.1	103.5	222.5	29.2	251.7	259.5	11.6	49.2
South Western Victoria	30.5	29.0	59.5	7.8	67.3	58.3	11.6	53.6
Western Victoria	26.2	22.7	48.8	6.6	55.4	57.9	11.9	48.9
Northern Victoria	41.1	29.8	70.9	10.0	80.8	94.1	12.3	46.2
Eastern Victoria	21.3	22.0	43.4	4.8	48.2	49.2	10.0	49.5
Total	493.2	332.6	825.8	113.0	938.8	842.0	12.0	52.7

**TABLE 9. CIVILIAN POPULATION AGED 15 YEARS AND OVER BY LABOUR FORCE STATUS,
VICTORIAN REGIONS, FEBRUARY 1992 - continued**

Region	Employed			Unemp- loyed ('000)	Labour force ('000)	Not in labour force ('000)	Unemp- loyment rate (per cent)	Partici- pation rate (per cent)
	Full- time ('000)	Part- time ('000)	Total ('000)					
PERSONS								
Melbourne Statistical Division-	1,095.5	304.7	1,400.1	203.5	1,603.6	882.7	12.7	64.5
Outer Western Melbourne	159.7	40.1	199.7	32.8	232.5	132.1	14.1	63.8
North Western Melbourne	75.1	16.2	91.3	19.5	110.8	69.6	17.6	61.4
Inner Melbourne	81.6	21.1	102.7	18.5	121.2	53.9	15.3	69.2
North Eastern Melbourne	138.9	39.5	178.4	26.4	204.8	112.9	12.9	64.5
Inner Eastern Melbourne	166.4	50.9	217.3	19.3	236.6	136.5	8.2	63.4
Southern Melbourne	126.2	34.9	161.1	22.1	183.1	109.8	12.0	62.5
Outer Eastern Melbourne	162.1	51.4	213.5	20.1	233.6	112.1	8.6	67.6
Mornington Peninsula	185.4	50.6	236.1	44.9	280.9	155.8	16.0	64.3
Balance of Victoria-	413.7	138.8	552.5	70.6	623.0	389.5	11.3	61.5
South Western Victoria	102.9	36.1	139.0	20.2	159.1	91.0	12.7	63.6
Western Victoria	87.1	29.8	116.9	11.3	128.2	87.2	8.8	59.5
Northern Victoria	139.8	42.9	182.6	25.8	208.4	140.4	12.4	59.7
Eastern Victoria	84.0	30.0	114.0	13.3	127.3	70.8	10.5	64.3
Total	1,509.2	443.4	1,952.6	274.0	2,226.6	1,272.2	12.3	63.6

**PARTICIPATION RATES: METROPOLITAN AND EX-METROPOLITAN
AREAS BY GENDER, VICTORIA, FEBRUARY 1992**



**TABLE 10. CIVILIAN POPULATION AGED 15 YEARS AND OVER BY LABOUR FORCE STATUS AND AGE,
VICTORIAN REGIONS, FEBRUARY 1992**

Age (years)	Males				Females				Persons			
	Employed (<i>'000</i>)	Labour force (<i>'000</i>)	Not in labour force (<i>'000</i>)	Partici- pation rate (per cent)	Employed (<i>'000</i>)	Labour force (<i>'000</i>)	Not in labour force (<i>'000</i>)	Partici- pation rate (per cent)	Employed (<i>'000</i>)	Labour force (<i>'000</i>)	Not in labour force (<i>'000</i>)	Partici- pation rate (per cent)
OUTER WESTERN MELBOURNE												
15 - 24	19.3	24.8	10.8	69.7	17.9	26.7	11.9	69.2	37.2	51.5	22.7	69.4
25 - 34	35.4	38.2	*2.5	93.8	23.9	28.0	14.3	66.2	59.3	66.2	16.8	79.7
35 - 44	31.4	35.5	*1.3	96.4	24.1	26.3	12.3	68.2	55.5	61.8	13.6	82.0
45 - 54	21.9	23.8	*2.6	90.1	12.3	13.5	9.6	58.6	34.2	37.4	12.2	75.4
55 and over	10.1	12.2	27.9	30.5	3.4	3.4	38.9	8.1	13.5	15.6	66.8	19.0
Total	118.2	134.6	45.2	74.9	81.5	97.9	86.9	53.0	199.7	232.5	132.1	63.8
NORTH WESTERN MELBOURNE												
15 - 24	9.2	13.0	6.5	66.8	13.0	16.5	7.2	69.6	22.2	29.5	13.7	68.3
25 - 34	18.8	21.3	*1.2	94.5	12.1	14.0	5.8	70.8	30.9	35.4	7.0	83.4
35 - 44	10.4	12.8	*1.4	90.3	7.0	9.0	6.9	56.5	17.4	21.8	8.3	72.4
45 - 54	7.4	9.1	*1.7	84.3	5.5	6.2	5.9	51.3	12.9	15.3	7.6	66.8
55 and over	5.9	6.7	12.5	34.9	*2.1	*2.1	20.5	*9.2	8.0	8.8	33.0	21.0
Total	51.7	62.9	23.3	73.0	39.6	47.9	46.3	50.8	91.3	110.8	69.6	61.4
INNER MELBOURNE												
15 - 24	8.1	10.6	3.8	73.7	8.4	13.4	*2.6	83.5	16.6	24.0	6.4	78.8
25 - 34	23.0	26.5	*2.8	90.4	21.2	22.6	3.6	86.4	44.2	49.1	6.4	88.5
35 - 44	14.6	16.9	*1.1	93.9	7.0	8.2	*3.3	71.6	21.5	25.2	4.4	85.2
45 - 54	8.6	9.6	*1.7	85.2	5.4	6.2	*2.1	74.4	14.0	15.8	3.8	80.6
55 and over	5.2	6.0	12.9	31.7	*1.1	*1.1	20.0	*5.4	6.4	7.2	32.9	17.8
Total	59.6	69.7	22.3	75.8	43.1	51.5	31.6	62.0	102.7	121.2	53.9	69.2
NORTH EASTERN MELBOURNE												
15 - 24	15.4	23.1	10.3	69.1	18.0	22.3	10.4	68.2	33.5	45.4	20.7	68.6
25 - 34	25.5	29.7	*1.8	94.3	23.2	25.3	11.2	69.4	48.6	55.1	12.9	81.0
35 - 44	23.2	26.7	*3.0	90.0	23.9	24.6	5.8	81.0	47.1	51.3	8.8	85.4
45 - 54	22.0	23.0	*2.2	91.3	11.9	12.6	10.5	54.5	33.8	35.6	12.7	73.7
55 and over	11.4	13.3	19.6	40.4	3.9	4.2	38.2	9.9	15.4	17.5	57.8	23.2
Total	97.5	115.8	36.9	75.8	80.9	89.0	76.1	53.9	178.4	204.8	112.9	64.5
INNER EASTERN MELBOURNE												
15 - 24	26.7	32.7	14.7	69.0	25.4	28.8	13.1	68.8	52.1	61.5	27.7	68.9
25 - 34	22.6	25.3	*1.5	94.3	20.4	22.1	5.9	79.1	43.0	47.5	7.4	86.5
35 - 44	24.7	25.8	*0.8	97.0	23.2	24.5	9.1	73.0	48.0	50.3	9.9	83.6
45 - 54	27.1	28.1	*1.1	96.1	22.1	23.3	11.0	67.9	49.2	51.4	12.1	80.9
55 and over	18.0	18.8	26.6	41.4	7.1	7.1	52.8	11.9	25.1	25.9	79.3	24.6
Total	119.1	130.8	44.7	74.5	98.2	105.8	91.8	53.6	217.3	236.6	136.5	63.4

**TABLE 10. CIVILIAN POPULATION AGED 15 YEARS AND OVER BY LABOUR FORCE STATUS AND AGE,
VICTORIAN REGIONS, FEBRUARY 1992 - *continued***

Age (years)	Males				Females				Persons			
	Employed (<i>'000</i>)	Labour force (<i>'000</i>)	Not in labour force (<i>'000</i>)	Partici- pation rate (per cent)	Employed (<i>'000</i>)	Labour force (<i>'000</i>)	Not in labour force (<i>'000</i>)	Partici- pation rate (per cent)	Employed (<i>'000</i>)	Labour force (<i>'000</i>)	Not in labour force (<i>'000</i>)	Partici- pation rate (per cent)
SOUTHERN MELBOURNE												
15 - 24	8.1	11.7	8.1	59.2	13.3	18.6	7.7	70.6	21.4	30.3	15.8	65.7
25 - 34	23.9	26.7	*1.6	94.4	18.8	20.5	5.8	77.9	42.8	47.3	7.4	86.5
35 - 44	23.2	26.7	*1.3	95.2	22.4	24.4	6.9	77.8	45.7	51.1	8.3	86.0
45 - 54	16.1	17.8	*2.2	89.1	13.0	14.2	5.9	70.8	29.0	32.0	8.0	79.9
55 and over	15.8	16.1	23.3	40.8	6.4	6.4	46.9	12.0	22.2	22.5	70.3	24.2
Total	87.2	99.0	36.5	73.0	73.9	84.1	73.3	53.4	161.1	183.1	109.8	62.5
OUTER EASTERN MELBOURNE												
15 - 24	23.5	28.0	11.0	71.9	21.1	26.1	9.5	73.4	44.6	54.1	20.4	72.6
25 - 34	34.5	38.1	*0.8	98.1	19.5	21.4	10.6	66.8	54.0	59.5	11.4	84.0
35 - 44	33.3	34.7	*1.4	96.2	26.1	26.9	8.8	75.4	59.4	61.5	10.1	85.9
45 - 54	20.8	22.5	*2.3	90.5	17.1	17.6	7.1	71.2	37.9	40.1	9.5	80.9
55 and over	13.0	13.5	21.1	39.1	4.5	4.8	39.7	10.7	17.5	18.3	60.7	23.2
Total	125.1	136.8	36.5	78.9	88.4	96.8	75.7	56.1	213.5	233.6	112.1	67.6
MORNINGTON PENINSULA												
15 - 24	24.5	37.4	13.4	73.6	18.1	25.2	14.4	63.7	42.6	62.6	27.8	69.2
25 - 34	34.4	39.9	*1.2	97.1	30.7	33.3	17.7	65.4	65.1	73.2	18.9	79.5
35 - 44	41.3	45.0	*3.0	93.8	29.0	32.8	12.2	72.9	70.3	77.9	15.2	83.7
45 - 54	26.4	29.2	4.3	87.2	15.3	18.0	11.0	62.1	41.7	47.2	15.3	75.6
55 and over	11.9	15.3	33.1	31.6	4.5	4.7	45.5	9.4	16.4	20.1	78.7	20.3
Total	138.4	166.8	55.0	75.2	97.7	114.1	100.8	53.1	236.1	280.9	155.8	64.3
TOTAL MELBOURNE STATISTICAL DIVISION												
15 - 19 -	40.0	59.7	62.5	48.8	46.6	65.3	52.9	55.2	86.6	124.9	115.4	52.0
15 - 17	17.2	24.0	46.4	34.0	20.9	27.5	40.3	40.5	38.1	51.4	86.7	37.2
18 - 19	22.8	35.7	16.1	69.0	25.7	37.8	12.7	74.9	48.5	73.5	28.7	71.9
20 - 24	95.0	121.7	16.0	88.4	88.5	112.3	23.8	82.5	183.5	234.0	39.8	85.5
25 - 34	218.1	245.9	13.4	94.8	169.8	187.3	74.8	71.5	387.9	433.2	88.2	83.1
35 - 44	202.1	224.2	13.3	94.4	162.8	176.7	65.2	73.0	364.9	401.0	78.5	83.6
45 - 54	150.3	163.1	18.1	90.0	102.5	111.6	63.1	63.9	252.8	274.7	81.2	77.2
55 - 59	45.7	52.8	15.8	76.9	19.8	20.3	46.4	30.4	65.5	73.1	62.3	54.0
60 - 64	31.4	34.7	29.6	54.0	7.3	7.6	57.0	11.7	38.7	42.3	86.6	32.8
65 and over	14.4	14.4	131.6	9.9	6.0	6.0	199.1	2.9	20.4	20.4	330.7	5.8
Total	796.9	916.5	300.3	75.3	603.3	687.1	582.5	54.1	1,400.1	1,603.6	882.7	64.5

**TABLE 10. CIVILIAN POPULATION AGED 15 YEARS AND OVER BY LABOUR FORCE STATUS AND AGE,
VICTORIAN REGIONS, FEBRUARY 1992 - *continued***

Age (years)	Males				Females				Persons			
	Employed (<i>'000</i>)	Labour force (<i>'000</i>)	Not in labour force (<i>'000</i>)	Partici- pation rate (per cent)	Employed (<i>'000</i>)	Labour force (<i>'000</i>)	Not in labour force (<i>'000</i>)	Partici- pation rate (per cent)	Employed (<i>'000</i>)	Labour force (<i>'000</i>)	Not in labour force (<i>'000</i>)	Partici- pation rate (per cent)
SOUTH WESTERN VICTORIA												
15 - 24	14.0	19.1	5.4	77.9	12.4	16.6	5.5	75.1	26.3	35.6	10.9	76.6
25 - 34	19.7	22.1	*1.5	93.8	14.8	17.5	6.0	74.5	34.6	39.5	7.4	84.2
35 - 44	20.6	22.8	*1.4	94.1	17.2	17.9	6.4	73.6	37.7	40.7	7.9	83.8
45 - 54	13.5	14.7	*2.1	87.5	9.8	10.0	4.9	67.4	23.3	24.8	7.0	78.1
55 and over	11.7	13.2	22.3	37.2	5.3	5.3	35.5	13.0	17.0	18.5	57.9	24.2
Total	79.5	91.9	32.8	73.7	59.5	67.3	58.3	53.6	139.0	159.1	91.0	63.6
WESTERN VICTORIA												
15 - 24	11.2	13.2	7.8	62.7	12.0	16.5	7.2	69.7	23.2	29.6	15.0	66.4
25 - 34	17.2	17.8	*2.3	88.4	12.6	13.4	7.0	65.6	29.8	31.2	9.3	77.0
35 - 44	16.6	17.9	*1.1	94.4	11.6	12.4	6.2	66.9	28.2	30.3	7.2	80.8
45 - 54	12.5	12.7	*2.1	85.9	8.6	9.2	7.3	55.8	21.1	21.9	9.4	70.0
55 and over	10.6	11.1	15.9	41.2	*3.9	*3.9	30.3	*11.4	14.6	15.1	46.2	24.6
Total	68.0	72.7	29.2	71.3	48.8	55.4	57.9	48.9	116.9	128.2	87.2	59.5
NORTHERN VICTORIA												
15 - 24	20.5	25.8	8.8	74.6	13.5	19.3	13.3	59.1	34.0	45.1	22.1	67.1
25 - 34	26.7	31.4	*2.9	91.5	18.8	21.1	15.1	58.4	45.5	52.6	18.0	74.5
35 - 44	27.8	31.4	*3.1	91.1	19.2	20.2	10.6	65.6	47.0	51.7	13.7	79.1
45 - 54	20.1	21.4	*2.6	89.2	14.2	15.0	11.3	56.9	34.2	36.4	13.9	72.3
55 and over	16.7	17.4	29.0	37.6	5.2	5.2	43.8	10.7	21.9	22.7	72.7	23.7
Total	111.7	127.5	46.4	73.3	70.9	80.8	94.1	46.2	182.6	208.4	140.4	59.7
EASTERN VICTORIA												
15 - 24	14.8	18.8	*2.8	87.1	8.7	11.7	6.5	64.3	23.4	30.5	9.3	76.7
25 - 34	20.9	23.3	*0.6	97.5	11.8	12.5	8.6	59.4	32.7	35.8	9.2	79.7
35 - 44	16.0	16.5	*1.6	90.9	13.4	14.5	5.4	72.7	29.5	31.0	7.1	81.4
45 - 54	14.0	15.1	*0.8	94.9	7.3	7.3	*3.4	67.8	21.3	22.3	*4.3	84.0
55 and over	4.9	5.4	15.8	25.5	*2.2	*2.2	25.3	*8.0	7.1	7.6	41.1	15.7
Total	70.6	79.2	21.6	78.5	43.4	48.2	49.2	49.5	114.0	127.3	70.8	64.3

TABLE 10. CIVILIAN POPULATION AGED 15 YEARS AND OVER BY LABOUR FORCE STATUS AND AGE, VICTORIAN REGIONS, FEBRUARY 1992 - continued

Age (years)	Males				Females				Persons			
	Employed ('000)	Labour force ('000)	Not in labour force ('000)	Participation rate (per cent)	Employed ('000)	Labour force ('000)	Not in labour force ('000)	Participation rate (per cent)	Employed ('000)	Labour force ('000)	Not in labour force ('000)	Participation rate (per cent)
TOTAL BALANCE OF VICTORIA												
15 - 19 -	22.1	30.5	20.0	60.5	16.8	26.9	19.6	57.8	38.9	57.4	39.6	59.2
15 - 17	10.1	13.1	16.1	44.8	7.8	12.3	14.4	46.1	17.9	25.4	30.5	45.4
18 - 19	12.0	17.5	*3.8	82.0	9.0	14.6	5.3	73.5	21.0	32.1	9.1	77.9
20 - 24	38.3	46.3	4.9	90.4	29.8	37.1	12.8	74.3	68.1	83.5	17.7	82.5
25 - 34	84.5	94.6	7.3	92.8	58.0	64.5	36.6	63.8	142.5	159.1	43.9	78.4
35 - 44	81.0	88.7	7.2	92.5	61.4	65.0	28.6	69.4	142.4	153.7	35.8	81.1
45 - 54	60.1	63.9	7.6	89.4	39.9	41.5	26.9	60.7	99.9	105.4	34.5	75.3
55 - 59	20.4	21.6	7.3	74.8	9.1	9.1	19.4	32.0	29.5	30.7	26.7	53.5
60 - 64	14.1	16.1	13.1	55.2	*4.1	*4.1	24.9	*14.2	18.2	20.2	37.9	34.7
65 and over	9.5	9.5	62.6	13.1	*3.4	*3.4	90.6	*3.6	12.9	12.9	153.2	7.8
Total	329.9	371.3	130.0	74.1	222.5	251.7	259.5	49.2	552.5	623.0	389.5	61.5
TOTAL VICTORIA												
15 - 19 -	62.1	90.2	82.4	52.2	63.4	92.2	72.6	55.9	125.5	182.4	155.0	54.1
15 - 17	27.3	37.0	62.5	37.2	28.7	39.7	54.7	42.1	56.0	76.8	117.2	39.6
18 - 19	34.8	53.2	19.9	72.8	34.8	52.4	17.9	74.5	69.5	105.6	37.8	73.6
20 - 24	133.3	168.0	20.9	88.9	118.3	149.4	36.7	80.3	251.6	317.4	57.6	84.7
25 - 34	302.6	340.5	20.7	94.3	227.8	251.8	111.4	69.3	530.4	592.4	132.1	81.8
35 - 44	283.1	312.9	20.5	93.9	224.2	241.8	93.9	72.0	507.3	554.7	114.3	82.9
45 - 54	210.4	227.0	25.7	89.8	142.4	153.1	90.0	63.0	352.7	380.1	115.7	76.7
55 - 59	66.1	74.4	23.1	76.3	28.9	29.4	65.9	30.9	95.0	103.8	89.0	53.9
60 - 64	45.5	50.9	42.6	54.4	11.4	11.7	81.9	12.5	56.9	62.5	124.6	33.4
65 and over	23.9	23.9	194.2	10.9	9.4	9.4	289.7	3.1	33.3	33.3	483.9	6.4
Total	1,126.8	1,287.8	430.3	75.0	825.8	938.8	842.0	52.7	1,952.6	2,226.6	1,272.2	63.6

TABLE 11. EMPLOYED PERSONS BY INDUSTRY, VICTORIAN REGIONS, FEBRUARY 1992
('000)

Industry	Melbourne Statistical Division								Total
	Outer Western	North Western	Inner	North Eastern	Inner Eastern	Southern	Outer Eastern	Mornington Peninsula	
MALES									
Agriculture, forestry, fishing, hunting and mining	*2.6	*0.5	*1.0	*0.5	*1.0	*0.5	*2.0	7.3	15.5
Manufacturing	37.8	13.9	9.7	23.9	18.9	17.3	23.0	35.7	180.2
Construction	9.3	5.3	*1.3	11.1	9.0	5.1	15.1	15.1	71.4
Wholesale and retail	21.8	9.5	9.1	17.6	29.0	23.0	26.8	30.8	167.6
Transport and storage	9.7	6.9	*3.1	8.6	*3.4	4.2	9.2	10.2	55.3
Finance, property, and business services	9.9	3.6	11.0	10.3	25.3	12.3	17.2	10.6	100.2
Community services (a)	10.4	4.9	9.0	12.9	14.0	11.5	13.0	11.0	86.7
Recreational, personal, and other services	4.7	*2.7	8.7	4.9	8.0	5.9	5.2	7.8	47.9
Other industries (b)	12.0	4.4	6.6	7.7	10.6	7.3	13.5	9.9	72.1
Total	118.2	51.7	59.6	97.5	119.1	87.2	125.1	138.4	796.9
FEMALES									
Agriculture, forestry, fishing, hunting and mining	*1.3	*0.7	*0.0	*0.5	*0.0	*0.5	*1.2	3.8	8.0
Manufacturing	14.9	6.7	4.3	11.5	9.3	10.0	11.3	17.3	85.2
Construction	*0.8	*0.7	*0.5	*2.2	*1.0	*0.7	*2.5	*1.0	9.4
Wholesale and retail	18.2	8.3	4.9	14.0	25.5	16.3	24.5	21.9	133.6
Transport and storage	*2.9	*1.2	*1.9	*2.2	*2.0	*0.5	*1.7	*2.7	15.1
Finance, property, and business services	12.0	5.0	11.1	10.8	14.4	13.5	14.1	13.1	94.0
Community services (a)	21.0	9.9	11.0	27.7	34.1	21.4	22.1	24.7	171.8
Recreational, personal, and other services	6.1	3.2	5.4	5.2	6.8	5.5	6.7	6.2	45.0
Other industries (b)	4.5	3.9	4.0	6.9	5.2	5.5	4.3	6.9	41.1
Total	81.5	39.6	43.1	80.9	98.2	73.9	88.4	97.7	603.3
PERSONS									
Agriculture, forestry, fishing, hunting and mining	3.9	*1.2	*1.0	*1.0	*1.0	*1.0	*3.2	11.1	23.5
Manufacturing	52.7	20.6	14.0	35.3	28.1	27.3	34.3	53.0	265.4
Construction	10.1	6.1	*1.8	13.3	10.0	5.8	17.6	16.1	80.8
Wholesale and retail	40.0	17.8	14.0	31.5	54.4	39.3	51.3	52.7	301.2
Transport and storage	12.6	8.1	5.1	10.8	5.4	4.6	10.9	12.9	70.5
Finance, property, and business services	21.8	8.5	22.2	21.1	39.7	25.9	31.3	23.7	194.2
Community services (a)	31.3	14.8	20.0	40.6	48.0	32.9	35.1	35.7	258.5
Recreational, personal, and other services	10.7	5.8	14.1	10.1	14.8	11.4	11.9	14.1	92.9
Other industries (b)	16.5	8.3	10.6	14.6	15.8	12.8	17.8	16.8	113.2
Total	199.7	91.3	102.7	178.4	217.3	161.1	213.5	236.1	1,400.1

TABLE 11. EMPLOYED PERSONS BY INDUSTRY, VICTORIAN REGIONS, FEBRUARY 1992 - *continued*
(*'000*)

Industry	Balance of Victoria				Total Victoria			
	South Western	Western	Northern	Eastern	Total	Married	Other	Total
MALES								
Agriculture, forestry, fishing, hunting and mining	12.7	14.9	25.3	18.9	71.8	53.6	33.7	87.3
Manufacturing	19.7	11.1	17.6	10.3	58.7	164.5	74.4	238.9
Construction	8.6	4.8	11.8	6.7	31.9	69.9	33.4	103.3
Wholesale and retail	9.8	12.8	16.6	11.3	50.4	131.2	86.8	218.0
Transport and storage	*1.7	*4.3	9.1	*3.3	18.4	52.1	21.6	73.8
Finance, property, and business services	4.9	*2.8	4.8	*3.7	16.2	78.4	38.0	116.4
Community services (a)	9.7	10.1	10.2	5.8	35.7	88.6	33.8	122.4
Recreational, personal, and other services	6.0	*3.1	5.7	*2.0	16.6	34.2	30.3	64.5
Other industries (b)	6.4	*4.3	10.7	8.7	30.2	73.4	28.9	102.3
Total	79.5	68.0	111.7	70.6	329.9	745.9	380.9	1,126.8
FEMALES								
Agriculture, forestry, fishing, hunting and mining	5.2	7.2	7.7	8.4	28.5	29.1	7.4	36.5
Manufacturing	5.9	5.1	8.7	*3.2	22.8	71.7	36.3	108.0
Construction	*1.1	*0.8	*1.9	*1.3	5.0	12.2	*2.2	14.4
Wholesale and retail	10.6	8.9	13.6	8.8	41.7	90.7	84.6	175.3
Transport and storage	*1.3	*0.5	*1.5	*0.5	*3.9	10.4	8.6	19.0
Finance, property, and business services	7.4	*2.8	4.4	4.8	19.3	62.1	51.3	113.3
Community services (a)	17.6	15.5	18.2	11.2	62.5	153.3	81.1	234.4
Recreational, personal, and other services	5.9	5.1	9.3	*2.4	22.7	34.4	33.3	67.7
Other industries (b)	4.5	*3.0	5.7	*2.8	16.1	36.7	20.5	57.2
Total	59.5	48.8	70.9	43.4	222.5	500.5	325.3	825.8
PERSONS								
Agriculture, forestry, fishing, hunting and mining	17.9	22.1	33.0	27.4	100.3	82.7	41.1	123.8
Manufacturing	25.6	16.2	26.3	13.5	81.6	236.3	110.7	347.0
Construction	9.7	5.6	13.7	7.9	36.9	82.1	35.6	117.7
Wholesale and retail	20.4	21.7	30.1	20.0	92.2	221.9	171.4	393.3
Transport and storage	*3.0	4.8	10.6	*3.9	22.3	62.5	30.2	92.7
Finance, property, and business services	12.4	5.6	9.2	8.4	35.5	140.4	89.3	229.7
Community services (a)	27.3	25.6	28.4	17.0	98.3	241.9	114.9	356.7
Recreational, personal, and other services	11.8	8.2	15.0	*4.4	39.3	68.6	63.6	132.3
Other industries (b)	11.0	7.4	16.4	11.5	46.2	110.1	49.3	159.4
Total	139.0	116.9	182.6	114.0	552.5	1,246.4	706.2	1,952.6

(a) Comprises health; education, libraries, etc.; welfare and religious institutions; and other community services. (b) Comprises electricity, gas, and water; communication; and public administration and defence.

TABLE 12. EMPLOYED PERSONS BY OCCUPATION, VICTORIAN REGIONS, FEBRUARY 1992
(^{'000})

Occupation	Melbourne Statistical Division								Total
	Outer Western	North Western	Inner	North Eastern	Inner Eastern	Southern	Outer Eastern	Mornington Peninsula	
MALES									
Managers, and administrators	9.7	4.9	8.9	11.7	17.1	21.2	15.3	18.2	107.1
Professionals	12.0	3.9	17.2	13.1	29.4	22.7	21.0	11.4	130.7
Para-professionals	6.2	3.5	*3.1	5.7	6.6	*3.9	10.0	6.9	45.9
Tradespersons	29.9	14.4	5.1	25.7	23.0	10.6	32.3	39.4	180.2
Clerks	11.0	3.1	5.1	8.1	9.7	4.1	10.3	10.0	61.5
Salespersons, and personal service workers	8.9	*2.9	8.1	9.0	16.2	9.4	9.9	11.0	75.4
Plant, and machine operators and drivers	17.0	9.6	*2.9	12.3	5.7	5.3	9.2	16.0	78.2
Labourers, and related workers	23.5	9.5	9.3	11.8	11.4	10.0	17.0	25.5	117.9
Total	118.2	51.7	59.6	97.5	119.1	87.2	125.1	138.4	796.9
FEMALES									
Managers, and administrators	3.5	*1.0	*2.2	*2.4	4.3	5.5	*3.2	6.2	28.4
Professionals	9.2	4.5	14.2	12.4	22.6	17.0	11.6	9.5	100.9
Para-professionals	5.2	*2.5	*2.2	5.5	7.9	4.6	5.5	3.7	37.0
Tradespersons	*2.3	*1.5	*1.2	*1.8	*2.9	*2.3	4.5	*2.5	19.0
Clerks	24.4	14.1	10.4	31.3	28.0	20.8	31.2	33.6	193.8
Salespersons, and personal service workers	18.9	8.6	8.1	15.0	23.7	13.3	21.4	22.9	132.0
Plant, and machine operators and drivers	6.0	*2.5	*1.6	4.0	*2.7	*2.9	*3.2	3.7	26.6
Labourers, and related workers	12.0	4.9	*3.3	8.5	6.2	7.4	7.9	15.5	65.7
Total	81.5	39.6	43.1	80.9	98.2	73.9	88.4	97.7	603.3
PERSONS									
Managers, and administrators	13.3	5.9	11.0	14.2	21.4	26.7	18.6	24.4	135.4
Professionals	21.2	8.4	31.4	25.5	51.9	39.8	32.6	20.9	231.6
Para-professionals	11.4	6.0	5.2	11.1	14.5	8.5	15.4	10.6	82.8
Tradespersons	32.2	15.9	6.3	27.4	25.9	12.9	36.8	41.8	199.2
Clerks	35.4	17.2	15.5	39.4	37.7	24.9	41.5	43.7	255.3
Salespersons, and personal service workers	27.8	11.5	16.2	24.1	39.9	22.7	31.3	33.9	207.4
Plant, and machine operators and drivers	23.0	12.1	4.5	16.4	8.4	8.2	12.4	19.8	104.8
Labourers, and related workers	35.5	14.4	12.6	20.3	17.6	17.4	24.9	41.0	183.6
Total	199.7	91.3	102.7	178.4	217.3	161.1	213.5	236.1	1,400.1

TABLE 12. EMPLOYED PERSONS BY OCCUPATION, VICTORIAN REGIONS, FEBRUARY 1992 —
continued
 ('000)

Occupation	Balance of Victoria					Total Victoria		
	South Western	Western	Northern	Eastern	Total	Married	Other	Total
MALES								
Managers, and administrators	14.8	18.9	25.8	15.5	75.0	147.7	34.4	182.0
Professionals	8.9	7.4	7.9	6.4	30.6	115.8	45.5	161.4
Para-professionals	6.7	*3.4	4.9	*3.6	18.6	46.1	18.4	64.5
Tradespersons	19.8	11.6	25.5	19.2	76.1	164.8	91.5	256.3
Clerks	*3.7	*3.5	*2.3	*1.1	10.7	40.9	31.3	72.2
Salespersons, and personal service workers	4.3	5.0	7.3	*2.5	19.1	49.3	45.2	94.5
Plant, and machine operators and drivers	5.8	8.0	14.6	6.3	34.8	83.4	29.6	112.9
Labourers, and related workers	15.6	10.1	23.4	15.9	65.1	97.9	85.1	183.0
Total	79.5	68.0	111.7	70.6	329.9	745.9	380.9	1,126.8
FEMALES								
Managers, and administrators	6.7	6.8	11.1	7.3	32.0	50.7	9.7	60.3
Professionals	9.5	6.3	8.2	4.8	28.8	78.9	50.8	129.7
Para-professionals	*2.7	*3.4	*3.2	*2.4	11.7	30.6	18.1	48.7
Tradespersons	*2.8	*2.8	*4.0	*2.1	11.6	16.5	14.1	30.6
Clerks	11.8	8.1	15.8	11.4	47.1	153.6	87.3	240.9
Salespersons, and personal service workers	14.2	11.2	14.9	6.9	47.2	78.3	100.8	179.1
Plant, and machine operators and drivers	*3.2	*0.3	4.8	*0.7	8.9	26.2	9.4	35.6
Labourers, and related workers	8.5	10.0	8.9	7.8	35.2	65.8	35.1	100.9
Total	59.5	48.8	70.9	43.4	222.5	500.5	325.3	825.8
PERSONS								
Managers, and administrators	21.6	25.6	36.9	22.8	107.0	198.3	44.1	242.4
Professionals	18.4	13.8	16.1	11.2	59.4	194.8	96.3	291.0
Para-professionals	9.4	6.9	8.1	6.0	30.4	76.7	36.5	113.2
Tradespersons	22.5	14.4	29.5	21.3	87.7	181.3	105.6	286.9
Clerks	15.5	11.6	18.1	12.6	57.8	194.5	118.6	313.0
Salespersons, and personal service workers	18.5	16.1	22.2	9.4	66.3	127.6	146.0	273.6
Plant, and machine operators and drivers	9.0	8.3	19.4	7.0	43.7	109.6	38.9	148.5
Labourers, and related workers	24.1	20.1	32.4	23.7	100.3	163.7	120.2	283.9
Total	139.0	116.9	182.6	114.0	552.5	1,246.4	706.2	1,952.6

**TABLE 13. EMPLOYED PERSONS BY INDUSTRY AND OCCUPATION BY AGE,
VICTORIA, FEBRUARY 1992**
('000)

Classification	Age group (years)						60 and over	Total
	15 - 19	20 - 24	25 - 34	35 - 44	45 - 54	55 - 59		
INDUSTRY DIVISION OR SUB-DIVISION								
Agriculture, and services to agriculture	8.6	10.8	22.6	20.3	21.8	9.7	21.0	114.9
Forestry, fishing, and hunting	*0.7	*0.7	*0.8	*0.8	*0.3	*0.2	*0.0	*2.5
Mining	*0.0	*0.9	*1.3	*2.1	*0.3	*0.5	*0.3	5.4
Manufacturing -	17.2	42.8	97.1	82.9	73.6	20.0	13.4	347.0
Food, beverages, and tobacco	4.9	6.7	15.1	16.5	12.3	*3.9	*1.8	61.1
Metal products	*2.3	*2.9	11.7	10.4	8.8	*2.8	*2.3	41.3
Other manufacturing	9.9	33.2	70.4	56.0	52.5	13.3	9.3	244.6
Construction	5.0	16.2	31.9	27.1	22.3	8.5	6.6	117.7
Wholesale and retail	63.6	58.1	91.4	90.5	61.1	16.5	12.0	393.3
Transport and storage	*2.7	9.2	28.2	24.6	20.6	*4.4	*3.0	92.7
Finance, property, and business services	6.8	39.1	70.3	61.2	35.2	7.7	9.4	229.7
Community services (a)	4.9	34.6	98.6	117.8	69.6	15.8	15.5	356.7
Recreational, personal, and other services	15.0	23.4	39.8	27.1	16.0	5.1	5.8	132.3
Other industries (b)	*1.1	15.6	48.2	52.9	32.0	6.4	*3.1	159.4
Total	125.5	251.6	530.4	507.3	352.7	95.0	90.1	1,952.6
OCCUPATION								
Managers, and administrators	*1.3	7.7	47.9	72.1	66.3	18.0	29.1	242.4
Professionals	*1.5	23.5	87.3	99.9	57.3	12.1	9.5	291.0
Para-professionals	*1.1	11.9	37.3	37.2	19.3	*4.3	*2.1	113.2
Tradespersons	20.6	52.6	84.5	54.6	48.4	16.0	10.2	286.9
Clerks	11.4	50.2	98.6	81.4	51.1	11.2	9.0	313.0
Salespersons, and personal service workers	52.9	56.9	67.5	55.2	28.5	7.3	5.3	273.6
Plant, and machine operators and drivers	*1.3	11.7	41.8	43.0	34.5	9.6	6.6	148.5
Labourers, and related workers	35.5	37.0	65.4	63.9	47.3	16.4	18.4	283.9
Total	125.5	251.6	530.4	507.3	352.7	95.0	90.1	1,952.6

(a) Comprises health; education, libraries, etc.; welfare and religious institutions; and other community services. (b) Comprises electricity, gas, and water; communication; and public administration and defence.

TABLE 14. EMPLOYED PERSONS: AVERAGE WEEKLY HOURS WORKED (a) BY INDUSTRY, AND OCCUPATION, VICTORIA, FEBRUARY 1992
(hours)

Classification	Males			Females			Persons		
	Married	Other	Total	Married	Other	Total	Married	Other	Total
INDUSTRY DIVISION OR SUB-DIVISION									
Agriculture, and services to agriculture	56.1	47.7	52.8	27.9	23.3	27.0	45.7	43.3	44.9
Forestry, fishing, and hunting	*48.9	*46.1	47.8	*4.0	*7.5	*6.1	*43.4	*36.4	40.4
Mining	41.9	*43.4	42.4	*35.0	*38.0	*36.4	41.4	*42.7	41.8
Manufacturing -	40.7	38.3	40.0	33.7	34.3	33.9	38.6	37.0	38.1
Food, beverages, and tobacco	43.5	37.4	41.2	36.1	26.8	34.0	40.9	35.3	39.0
Metal products	42.7	39.3	41.8	30.6	30.9	30.7	40.4	37.3	39.5
Other manufacturing	39.6	38.5	39.3	33.4	35.6	34.2	37.7	37.4	37.6
Construction	39.5	33.2	37.5	15.1	*33.0	17.8	35.9	33.2	35.1
Wholesale and retail	45.3	33.7	40.7	29.3	24.5	27.0	38.8	29.2	34.6
Transport and storage	43.7	40.1	42.7	27.5	28.5	28.0	41.0	36.8	39.7
Finance, property, and business services	41.9	37.3	40.4	28.3	33.6	30.7	35.9	35.2	35.6
Community services (b)	40.9	34.2	39.1	28.3	32.5	29.7	32.9	33.0	32.9
Recreational, personal, and other services	44.0	29.1	37.0	24.1	28.4	26.2	34.0	28.7	31.5
Other industries (c)	35.6	35.2	35.5	29.0	30.2	29.4	33.4	33.1	33.3
Total	42.4	36.3	40.4	28.6	29.9	29.1	36.9	33.4	35.6
OCCUPATION									
Managers, and administrators	53.6	54.3	53.7	38.5	44.7	39.5	49.7	52.2	50.2
Professionals	43.4	39.7	42.4	33.8	38.8	35.7	39.5	39.2	39.4
Para-professionals	38.3	35.0	37.4	27.4	30.8	28.7	34.0	32.9	33.6
Tradespersons	39.4	36.6	38.4	29.9	35.2	32.3	38.5	36.4	37.8
Clerks	37.4	36.0	36.8	27.4	32.7	29.3	29.5	33.6	31.1
Salespersons, and personal service workers	39.8	28.4	34.3	23.2	22.9	23.0	29.6	24.6	26.9
Plant, and machine operators and drivers	40.9	42.0	41.2	32.9	33.8	33.1	39.0	40.0	39.2
Labourers, and related workers	36.2	29.5	33.1	22.8	22.7	22.8	30.8	27.5	29.4
Total	42.4	36.3	40.4	28.6	29.9	29.1	36.9	33.4	35.6

(a) Persons with jobs who did not work during the survey week have been included in the calculation of average weekly hours worked.

The relative standard errors of these estimates are obtained by first finding the relative standard error of the estimate of the total number of persons in the estimate (see Table A), and then multiplying by a factor of 0.7. For further information refer technical notes in The Labour Force, Australia (6203.0)(monthly). (b) Comprises health; education, libraries, etc.; welfare and religious institutions; and other community services. (c) Comprises electricity, gas, and water; communication; and public administration and defence.

**TABLE 15. EMPLOYED PERSONS: STATUS OF WORKER AND HOURS WORKED,
VICTORIA, FEBRUARY 1992**

Status of worker	Males			Females			Persons		
	Married	Other	Total	Married	Other	Total	Married	Other	Total
	'000								
Employers	51.8	10.1	61.9	23.2	*1.8	25.0	75.0	11.9	86.9
Self-employed	107.9	36.1	144.0	56.3	11.9	68.2	164.1	48.0	212.2
Wage and salary earners	584.0	325.5	909.5	411.9	306.1	717.9	995.9	631.5	1,627.4
Unpaid family helpers (a)	*2.2	9.2	11.4	9.2	5.5	14.7	11.4	14.7	26.1
Total	745.9	380.9	1,126.8	500.5	325.3	825.8	1,246.4	706.2	1,952.6
HOURS WORKED									
Employers	55.5	54.6	55.4	39.5	*42.1	39.7	50.5	52.7	50.8
Self-employed	44.1	42.3	43.6	26.2	34.3	27.6	37.9	40.3	38.5
Wage and salary earners	41.1	35.5	39.1	28.7	29.8	29.2	36.0	32.7	34.7
Unpaid family helpers (a)	*19.8	22.0	21.6	11.1	24.4	16.1	12.8	22.9	18.5
Total	42.4	36.3	40.4	28.6	29.9	29.1	36.9	33.4	35.6

(a) Unpaid family helpers who worked 1 hour or more a week in a family business or farm.

**TABLE 16. UNEMPLOYED PERSONS: INDUSTRY AND OCCUPATION OF LAST JOB,
VICTORIA, FEBRUARY 1992**

Particulars	Number ('000)			Unemployment rate (per cent)		
	Males	Females	Persons	Males	Females	Persons
Employed (a) in the past two years -						
Industry -						
Manufacturing	29.9	12.6	42.6	11.1	10.5	10.9
Construction	19.8	*1.0	20.8	16.1	*6.4	15.0
Wholesale and retail	26.6	10.7	37.4	10.9	5.8	8.7
Community services (b)	*3.7	4.7	8.4	*2.9	2.0	2.3
Recreational, personal, and other services	5.3	5.6	10.9	7.6	7.6	7.6
Other industries (c)	24.5	12.1	36.6	6.1	5.1	5.7
Occupation -						
Tradespersons	32.2	*2.5	34.6	11.1	*7.5	10.8
Clerical	5.9	12.2	18.1	7.5	4.8	5.5
Salespersons, and personal service workers	13.5	11.3	24.8	12.5	5.9	8.3
Labourers, and related workers	37.0	11.8	48.8	16.8	10.5	14.7
Other occupations (d)	21.5	8.9	30.4	4.0	3.1	3.7
Total	109.9	46.8	156.7	8.9	5.4	7.4
Not employed (a) in the past two years	31.9	40.1	71.9
Stood down	*1.8	*3.0	4.9
Looking for first job	17.3	23.2	40.5
Total	161.0	113.0	274.0	12.5	12.0	12.3

(a) Having held a full-time job for two weeks. (b) Comprises health; education, libraries, etc.; welfare and religious institutions; and other community services. (c) Comprises agriculture and services to agriculture; forestry, fishing and hunting; mining; transport and storage; finance, property, and business services; electricity, gas, and water; communication; and public administration and defence. (d) Comprises managers and administrators; professionals; para-professionals; plant and machine operators and drivers.

**TABLE 17. UNEMPLOYED PERSONS BY DURATION OF UNEMPLOYMENT (a),
VICTORIA, FEBRUARY 1992**

Particulars	Number ('000)			Percentage distribution		
	Males	Females	Persons	Males	Females	Persons
Duration of unemployment (weeks) -						
Under 2	*3.6	5.9	9.5	*2.2	5.2	3.5
2 and under 4	8.5	8.9	17.4	5.3	7.9	6.3
4 and under 8	13.6	15.2	28.8	8.5	13.4	10.5
8 and under 13	16.9	19.2	36.1	10.5	17.0	13.2
13 and under 26	24.4	13.2	37.6	15.2	11.7	13.7
26 and under 52	35.9	15.9	51.7	22.3	14.0	18.9
52 and under 104	42.2	20.0	62.2	26.2	17.7	22.7
104 and over	15.9	14.8	30.7	9.9	13.1	11.2
Age (years) -						
15 - 19						
Under 13 weeks	11.0	16.5	27.5	6.8	14.6	10.1
13 weeks and under 52	10.3	5.2	15.5	6.4	4.6	5.7
52 weeks and over	6.8	7.0	13.8	4.2	6.2	5.0
Total	28.1	28.7	56.8	17.5	25.4	20.7
20 - 24						
Under 13 weeks	11.2	13.5	24.7	7.0	11.9	9.0
13 weeks and under 52	11.5	9.3	20.9	7.2	8.3	7.6
52 weeks and over	12.0	8.3	20.3	7.5	7.3	7.4
Total	34.8	31.1	65.9	21.6	27.5	24.0
25 and over						
Under 13 weeks	20.4	19.2	39.6	12.7	17.0	14.5
13 weeks and under 52	38.5	14.5	53.0	23.9	12.8	19.3
52 weeks and over	39.2	19.5	58.7	24.4	17.2	21.4
Total	98.1	53.2	151.3	60.9	47.1	55.2
Total	161.0	113.0	274.0	100.0	100.0	100.0

DURATION OF UNEMPLOYMENT (WEEKS)

Average (mean) duration-						
Aged 15 - 19	26.1	27.2	26.7
Aged 20 - 24	38.7	38.3	38.5
Aged 25 and over	53.6	53.1	53.5
All ages	45.6	42.4	44.3
Median duration (b)-						
Aged 15 - 19	15.0	12.0	13.0
Aged 20 - 24	26.0	14.0	21.0
Aged 25 and over	39.0	26.0	34.0
All ages	31.0	15.0	26.0

(a) Period from the time a person began looking for work, or was laid off to the end of the survey week. Periods of unemployment are recorded in complete weeks resulting in a slight understatement of duration of unemployment. (b) For information regarding the calculation of standard errors, refer to technical notes in The Labour Force, Australia (6203.0)(monthly)

EXPLANATORY NOTES

Introduction

This publication contains Victorian labour force estimates derived from the Monthly Population Survey conducted throughout Australia each month by the Australian Bureau of Statistics.

2. The survey is based on a multi-stage area sample of private dwellings (houses, flats, etc.) and non-private dwellings (hotels, motels, etc.) and covers about one-half of one per cent of the Victorian population. The information is obtained from the occupants by trained ABS interviewers.

Scope of survey

3. All persons aged 15 years and over are included in the survey except:

- (a) members of the permanent defence forces;
- (b) certain diplomatic personnel of overseas governments customarily excluded from census and estimated populations;
- (c) overseas residents in Australia; and
- (d) members of non-Australian defence forces (and their dependants) stationed in Australia.

Definitions

4. The labour force category to which a person is assigned depends on his or her actual activity (i.e. whether working, looking for work, etc.) during the reference week. The definitions conform closely to the standard definitions recommended by the ILO.

Employed persons comprise all those aged 15 years and over who, during the reference week:

- (a) worked for one hour or more for pay, profit, commission, or payment in kind in a job or business, or on a farm (including employees, employers, and self-employed persons); or
- (b) worked for one hour or more without pay in a family business or on a farm (i.e. unpaid family helper); or
- (c) were employees who had a job but were not at work and were:
 - (i) on paid leave;
 - (ii) on leave without pay for less than four weeks up to the end of the reference week;
 - (iii) stood down without pay because of bad weather or plant breakdown at their place of employment for less than four weeks, up to the end of the reference week;
 - (iv) on strike or locked out;
 - (v) on workers' compensation and expected to be returning to their job; or
 - (vi) receiving wages or salary while undertaking full-time study; or

- (d) were employers, self-employed persons or unpaid family helpers who had a job, business, or farm, but were not at work.

Unemployed persons are those aged 15 years and over who were not employed during the reference week, and:

- (a) had actively looked for full-time or part-time work at any time in the four weeks up to the end of the reference week and were:
 - (i) available for work in the reference week, or would have been available except for temporary illness (i.e. lasting for less than four weeks to the end of the reference week); or
 - (ii) waiting to start a new job within four weeks from the end of the reference week and would have started in the reference week if the job had been available then; or
- (b) were waiting to be called back to a full-time or part-time job from which they had been stood down without pay for less than four weeks up to the end of the reference week (including the whole of the reference week) for reasons other than bad weather or plant breakdown.

The *labour force* comprises all persons who, during the reference week, were employed or unemployed, as defined above.

The *unemployment rate* is the number of unemployed in each group as a percentage of the labour force in the same group.

The *participation rate* is the labour force in each group as a percentage of the civilian population aged 15 years and over in the same group.

Full-time workers are those who usually work 35 hours or more a week in all jobs and others who, although usually working less than 35 hours a week, worked 35 hours or more during the reference week.

Part-time workers are those who usually work less than 35 hours a week and who did so during the reference week. When recording hours of work, fractions of an hour are disregarded.

Hours of work. The figures of aggregate hours and average hours refer to actual hours worked during the reference week, not hours paid for.

Persons not in the labour force are those who, during the reference week, were not in the categories 'employed' or 'unemployed'.

Marital status. In the labour force survey, persons are classified as *married* or *not married*. Persons are classified as married, if they are reported as being married (including de facto) and their spouse was a usual resident of the household at the time of the survey.

Revision of series

5. New benchmarks based on the results of the 1986 Census of Population and Housing are now available and were introduced in the February issue of this publication. Labour force estimates have been revised for the period January 1984 to January 1989. All estimates produced after January 1989 will be based on the new benchmarks.

6. Commencing with the April 1986 labour force survey, the definition of employment has been extended to include all persons who worked without pay for one hour or more in a family business or on a farm (i.e. unpaid family helpers). More details about this change, together with other changes made to the questionnaire, are contained in *The Labour Force, Australia, April 1986* (6203.0) and in an information paper *Questionnaire used in the Labour Force Survey* (6232.0).

Status of worker

7. Status of worker is classified by occupational status, i.e. whether they were employers, self-employed persons, wage and salary earners (employees), or unpaid family helpers (who worked one hour or more in the reference week).

Classification of industry and occupation

8. Industry is classified according to the Australian Standard Industrial Classification (ASIC), 1983 and occupation according to the Australian Standard Classification of Occupations (ASCO), 1986. Occupational data classified to ASCO were introduced for the August 1986 survey, replacing the Classification and Classified List of Occupations, Revised, November 1980 used in previous surveys. The appendix in the August 1986 issue of *The Labour Force, Australia* (6203.0) contains a more detailed explanation of the concepts and structure underlying ASCO. Industry and occupation estimates are only available quarterly (i.e. each February, May, August and November).

Birthplace

9. From April 1991, labour force birthplace data are aggregated according to the major groups of the *Australian Standard Classification of Countries for Social Statistics* (ASCCSS) 1990 (1269.0). The ASCSS major groups are based on the concept of geographic proximity. For example, African countries are now covered by 'The Middle East and North Africa' and 'Africa (excluding North Africa)', while Asia has been split into 'Southeast Asia', 'Northeast Asia' and 'Southern Asia'. Data for selected individual countries will continue to be available from unpublished data sources.

Victorian regions

10. Detailed maps of the Labour force regions are presented at the end of this publication. Users should note that from September 1987 there were some significant changes made to the number and composition of Labour force regions for the Melbourne Statistical Division. These changes are presented in the maps on pages 35 and 36.

Reliability of estimates

11. Since the estimates in this publication are based on information obtained from occupants of a sample of dwellings they, and the movements derived from them, may differ from the figures that would have been produced if all dwellings had been included in the survey. One measure of the likely difference is given by the standard error of an estimate. Standard errors of survey estimates and month to month movements calculated for all regions are shown on pages 33 and 34.

12. As the above problems are compounded when the statistics are disaggregated to regional data, users are particularly advised to treat month to month movements for regional data with caution. An explanation of standard errors and their use can be found in the technical notes of *The Labour Force, Australia*, (6203.0) (monthly).

13. Labour force survey estimates are calculated in a such a way as to add up to the independently derived estimates of the population aged 15 years and over by age and sex. Regular independent estimates of the population at the regional level are not available for use as benchmarks in the manner described above. Therefore users should not use the data in this publication as a means to calculate the civilian population aged 15 years and over within each region.

Related publications

14. Users may also wish to refer to the following publications, available on request:
Statistical Maps, Victoria (1103.2) (irregular) (\$19.50)
Australian Standard Classification of Countries for Social Statistics (1269.0) (irregular) (\$20.00)
The Labour Force, Australia, Preliminary (6202.0) (monthly) (~~\$10.00~~)
The Labour Force, Australia (6203.0) (monthly) (\$14.50)
Labour Statistics, Australia (6101.0) (annual) (\$25.00)
A Guide to Labour Statistics (6102.0) (irregular) (\$15.00)
Projections of the Labour Force, Australia (6260.0) (irregular) (\$15.00)
Information Paper: Labour Force Survey - Sample Design (6269.0)

Information Paper: Labour Force Survey - Measuring Teenage Unemployment (6270.0)

Information Paper: Comparison of Employment Estimates From the Labour Force Survey and the Survey of Employment and Earnings (6263.0)

A Guide to Smoothing Time Series - Estimates of 'Trend' (1316.0)

Time Series Decomposition - An Overview (1317.0)

Information Paper: Revised Labour Force Survey Estimates (6276.0) (January 1984 to January 1989)

Information Paper: Measuring Employment and Unemployment (6279.0)

15. Current publications produced by the ABS are listed in the *Catalogue of Publications, Australia* (1101.0) which is available from any ABS Office.

16. Other unpublished data from labour force surveys on aspects of the Victorian labour force are held by the Victorian Office of the ABS, and may be available on request.

Statistics on DISCOVERY

17. Selected economic, social, and population statistics are available on *DISCOVERY* *656#.

Symbols and other usages

n.a. not available
 n.e.c. not elsewhere classified
 .. not applicable
 r revised
 * subject to sampling variability too high for most practical purposes

Where figures have been rounded, discrepancies may occur between sums of the component items and totals.

R. A. CROCKETT

Deputy Commonwealth Statistician

MORE LABOUR FORCE DATA

Much more information about the labour force can be made available, subject to statistical reliability. Time series are available for \$5.00 per series. Tailor-made tables can be provided in various media (cost depends on table complexity). Data items available include:

Employed persons
 Unemployed persons
 Participation rate
 Unemployment rate
 Persons not in the labour force

These items can be further classified by:

Sex	Hours worked
Age	Industry
Marital status	Occupation
Country of birth	Duration of Unemployment
Period of arrival	School attendance
Status of worker	Dissemination region
Full-time/part-time status	<i>and more...</i>

Contact: Andrew Brown (03) 615 7679

TABLE A: STANDARD ERRORS OF ESTIMATES, STATISTICAL REGIONS, VICTORIA (a)

Size of estimate	Victoria; Melbourne; Balance of Victoria	Outer Western Melbourne	North Western Melbourne	Inner Melbourne	North Eastern Melbourne	Inner Eastern Melbourne	Southern Melbourne	Outer Eastern Melbourne	Mornington Peninsula	South Western Victoria	Western Victoria	Northern Victoria	Eastern Victoria
500	370	290	290	320	320	300	350	330	310	340	370	340	360
1,000	530	410	420	450	450	430	490	460	440	490	520	490	520
2,000	750	590	600	640	640	620	700	660	630	690	740	700	740
2,500	840	660	670	720	720	690	790	740	700	780	830	780	830
3,000	910	720	730	790	790	760	860	810	770	850	910	860	910
3,500	980	780	790	860	860	820	930	880	840	920	990	930	980
4,000	1,050	840	850	920	920	880	1,000	940	900	990	1,050	1,000	1,050
4,500	1,100	890	900	980	980	940	1,050	1,000	950	1,050	1,100	1,050	1,100
5,000	1,150	940	960	1,050	1,050	990	1,100	1,050	1,000	1,100	1,200	1,100	1,200
6,000	1,250	1,050	1,050	1,150	1,150	1,100	1,250	1,150	1,100	1,200	1,300	1,250	1,300
8,000	1,450	1,200	1,200	1,300	1,300	1,250	1,450	1,350	1,300	1,400	1,500	1,450	1,500
10,000	1,600	1,350	1,350	1,500	1,500	1,400	1,600	1,500	1,450	1,600	1,700	1,600	1,700
20,000	2,200	1,950	1,950	2,100	2,100	2,050	2,300	2,200	2,050	2,300	2,450	2,300	2,400
30,000	2,600	2,400	2,450	2,600	2,600	2,500	2,850	2,700	2,550	2,800	3,000	2,850	3,000
40,000	2,950	2,800	2,800	3,050	3,050	2,900	3,300	3,150	2,950	3,300	3,500	3,300	3,500
50,000	3,250	3,150	3,150	3,450	3,450	3,300	3,750	3,500	3,350	3,700	3,950	3,700	3,900
100,000	4,300	4,500	4,550	4,950	4,950	4,750	5,400	5,100	4,800	5,300	5,700	5,400	5,600
200,000	5,600	6,500	6,600	7,100	7,100	6,800	7,800	7,300	7,000	7,700	8,200	7,700	8,200
300,000	6,600	8,100	8,200	8,900	8,900	8,500	9,600	9,100	8,600	9,500	10,200	9,600	10,100
400,000	7,300	9,400	9,600	10,300	10,300	9,900	11,200	10,600	10,100	11,100	11,900	11,200	11,800
500,000	7,900	10,600	10,800	11,600	11,700	11,100	12,700	11,900	11,400	12,500	13,400	12,600	13,300
1,000,000	10,100	15,400	15,600	16,900	16,900	16,200	18,400	17,300	16,500	18,200	19,400	18,300	19,300
2,000,000	12,800	22,400	22,700	24,600	24,600	23,500	26,700	25,200	24,000	26,400	28,300	26,600	28,100
5,000,000	17,100	36,900	37,400	40,400	40,500	38,700	44,000	41,500	39,500	43,500	46,500	43,800	46,200

(a) From March 1989, standard errors have been revised consistent with the new labour force sample introduced over the period September to December 1987.

TABLE B: STANDARD ERRORS OF ESTIMATES OF MONTH TO MONTH MOVEMENTS, STATISTICAL REGIONS, VICTORIA (a)

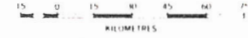
Size of estimate	Victoria;	Outer	North	Inner	North	Inner	Southern	Outer	Mornington	South	Western	Northern	Eastern
	Melbourne;	Western	Western	Inner	Eastern	Eastern	Melbourne	Eastern	Peninsula	Western	Victoria	Victoria	Victoria
	Balance of Victoria	Melbourne	Melbourne	Melbourne	Melbourne	Melbourne	Melbourne	Melbourne		Victoria	Victoria	Victoria	Victoria
500	440	250	210	260	240	260	250	250	280	250	280	280	280
1,000	570	340	280	360	330	350	340	340	370	340	380	370	380
2,000	740	460	380	480	450	480	460	460	500	460	510	510	510
2,500	800	510	420	530	490	530	510	510	550	510	560	560	560
3,000	860	550	460	580	530	570	550	550	600	550	600	600	610
3,500	910	590	490	620	570	610	590	590	640	580	650	650	650
4,000	950	620	520	650	600	640	630	630	680	620	680	680	690
4,500	1,000	660	540	690	630	680	660	660	710	650	720	720	730
5,000	1,050	690	570	720	660	710	690	690	750	680	750	750	760
6,000	1,100	740	620	780	720	770	750	750	810	740	820	820	820
8,000	1,250	840	700	880	810	870	850	850	920	840	920	920	930
10,000	1,350	930	770	970	900	960	930	930	1,000	9,20	1,000	1,000	1,050
20,000	1,700	1,250	1,050	1,300	1,200	1,300	1,250	1,250	1,350	1,250	1,400	1,350	1,400
30,000	2,000	1,500	1,250	1,550	1,450	1,550	1,500	1,500	1,650	1,500	1,650	1,650	1,650
40,000	2,200	1,700	1,400	1,750	1,650	1,750	1,700	1,700	1,850	1,700	1,850	1,850	1,850
50,000	2,400	1,850	1,550	1,950	1,800	1,900	1,900	1,850	2,050	1,850	2,050	2,050	2,050
100,000	3,100	2,500	2,100	2,650	2,450	2,600	2,550	2,550	2,750	2,500	2,750	2,750	2,800
200,000	4,000	3,400	2,800	3,550	3,300	3,500	3,100	3,400	3,700	3,400	3,750	3,750	3,750
300,000	4,650	4,050	3,350	4,250	3,900	4,200	4,100	4,050	4,400	4,050	4,450	4,450	4,500
400,000	5,200	4,600	3,800	4,800	4,450	4,750	4,600	4,600	5,000	4,550	5,000	5,000	5,100
500,000	5,600	5,100	4,200	5,300	4,900	5,200	5,100	5,100	5,500	5,000	5,600	5,500	5,600
1,000,000	7,300	6,800	5,700	7,200	6,600	7,100	6,900	6,900	7,400	6,800	7,500	7,500	7,600
2,000,000	9,400	9,200	7,700	9,700	8,900	9,500	9,300	9,300	10,000	9,200	10,100	10,100	10,200
5,000,000	13,100	13,700	11,400	14,400	13,300	14,200	13,800	13,800	14,900	13,600	15,100	15,100	15,200

(a) From March 1989, standard errors have been revised consistent with the new labour force sample introduced over the period September to December 1987.

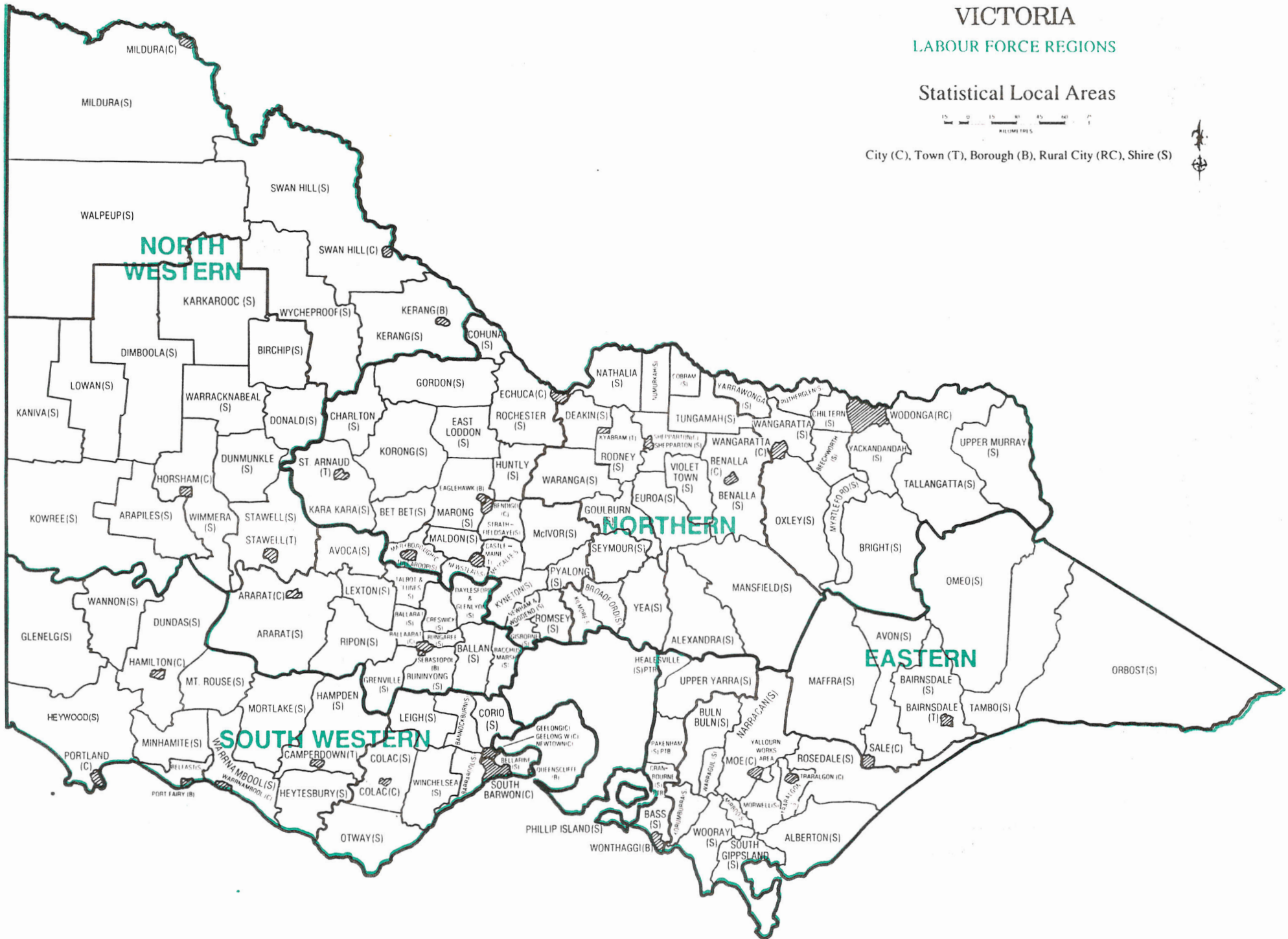
VICTORIA

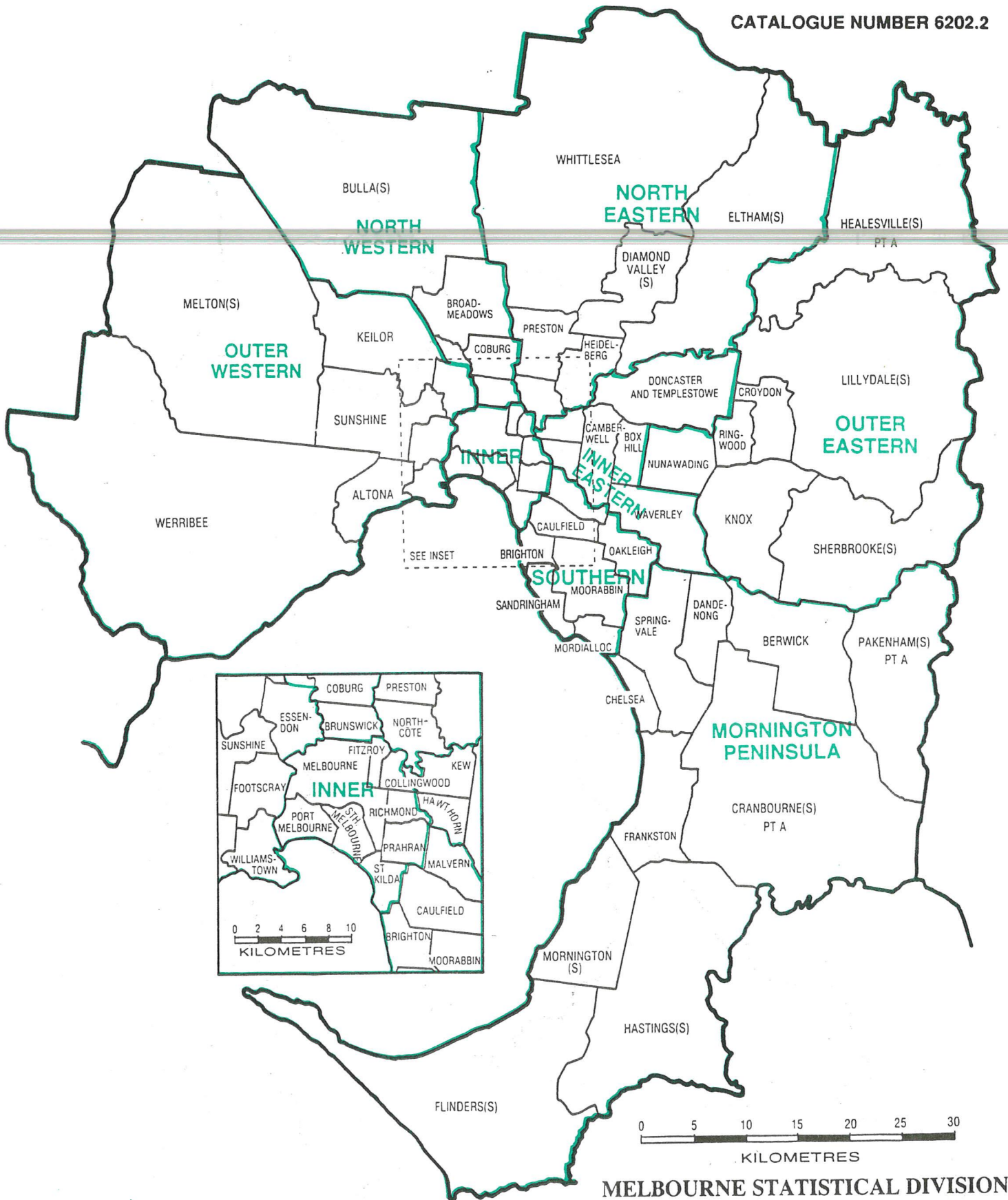
LABOUR FORCE REGIONS

Statistical Local Areas



City (C), Town (T), Borough (B), Rural City (RC), Shire (S)





MELBOURNE STATISTICAL DIVISION
Statistical Local Areas
LABOUR FORCE REGIONS



2062022002927

ISSN 1030-536X